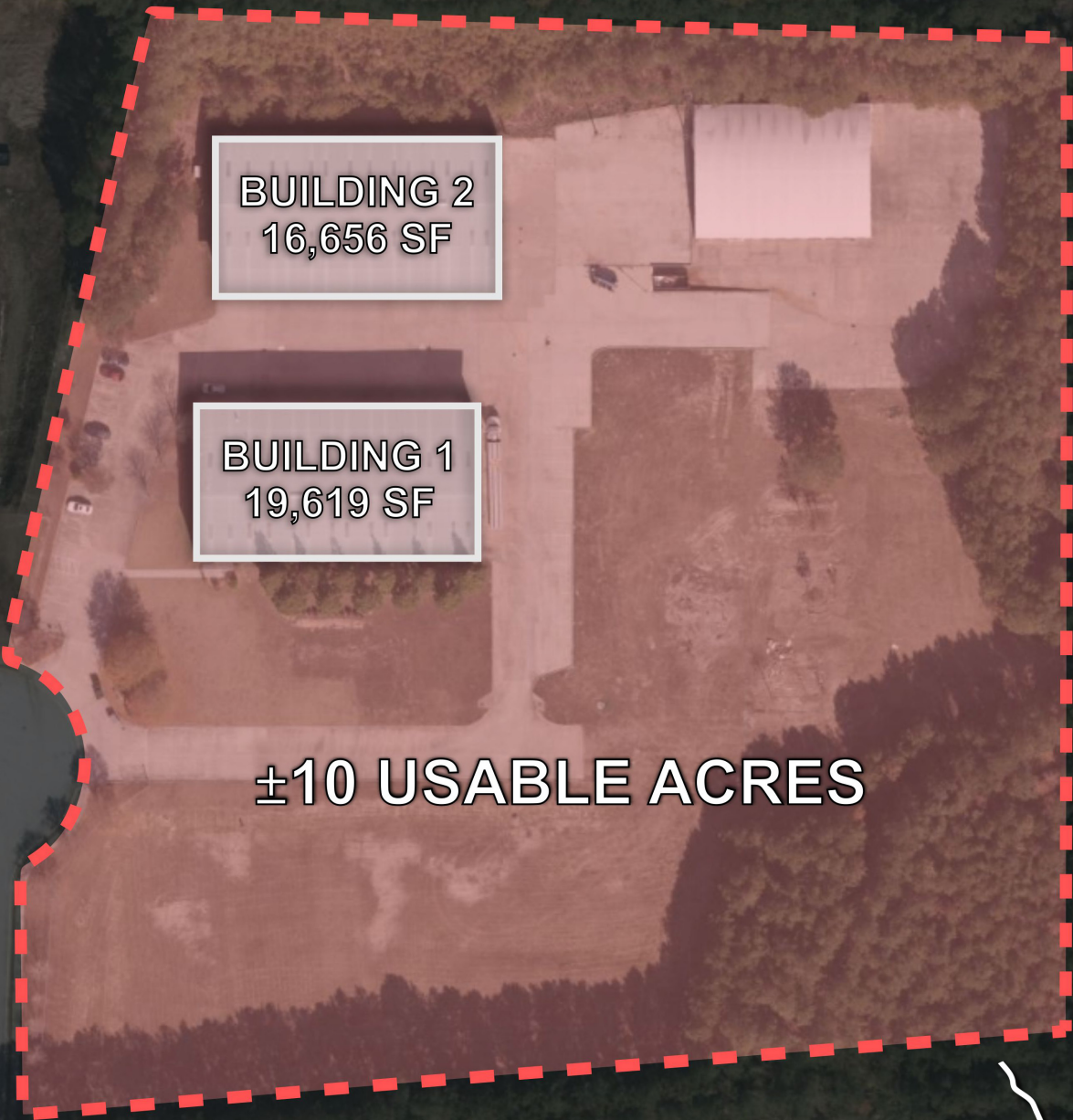


6727 OAK RIDGE COMMERCE WAY AUSTELL, GA 30168

±36,275 SF TOTAL AVAILABLE | ±10 USABLE ACRES



BUILDING 2
16,656 SF

BUILDING 1
19,619 SF

±10 USABLE ACRES

OAK RIDGE COMMERCE WAY

ROADWAYS	MILES
Thornton Rd	1 mile
I-20	1.5 miles
FIB	5.5 miles
I-285	8 miles
I-85 / I-75	14 miles



All information contained herein is believed to be accurate but is not warranted. This offer is subject to errors, omissions, prior sale or withdrawal.



Hughes Commercial Real Estate, Inc.
8215 Roswell Road, Building 700
Atlanta, GA 30350
770-559-1099 | hughes-cre.com

Mason Marsteller | 404-790-9615 | mason@hughes-cre.com
Elliott Stroud | 912-580-1617 | elliot@hughes-cre.com

6727 OAK RIDGE COMMERCE WAY AUSTELL, GA 30168

±36,275 SF TOTAL AVAILABLE | ±10 USABLE ACRES

BUILDING 1

TOTAL BUILDING SIZE	±19,619 SF
ADDITIONAL BUILDING OVERHANG	±3,500 SF
OFFICE	±5,474 SF - Two Story
WAREHOUSE	±14,145 SF with Mezzanine Storage
CEILING HEIGHT	26' - 28'
DRIVE-IN DOORS	One (1) 20' x 18 Door
DOCK PLATFORM	Available on Site



BUILDING 2

TOTAL BUILDING SIZE	±16,656 SF
ADDITIONAL BUILDING OVERHANG	±3,500 SF
WAREHOUSE	±16,656 SF
OFFICE	One (1) Restroom
WASH BAY	±4,000 SF with 50' x 80' Floor Drain
CEILING HEIGHT	26' - 28'
DRIVE-IN DOORS	Two (2) 20' x 18 Doors
CASED OPENING	One (1) 49' x 18'
DOCK PLATFORM	Available on Site



All information contained herein is believed to be accurate but is not warranted. This offer is subject to errors, omissions, prior sale or withdrawal.



Hughes Commercial Real Estate, Inc.
8215 Roswell Road, Building 700
Atlanta, GA 30350
770-559-1099 | hughes-cre.com

Mason Marsteller | 404-790-9615 | mason@hughes-cre.com

Elliott Stroud | 912-580-1617 | elliot@hughes-cre.com

6727 OAK RIDGE COMMERCE WAY AUSTELL, GA 30168

±36,275 SF TOTAL AVAILABLE | ±10 USABLE ACRES



Information contained herein is believed to be accurate but is not warranted. This offer is subject to errors, omissions, prior sale or withdrawal.



Hughes Commercial Real Estate, Inc.
8215 Roswell Road, Building 700
Atlanta, GA 30350
770-559-1099 | hughes-cre.com

Mason Marsteller | 404-790-9615 | mason@hughes-cre.com
Elliott Stroud | 912-580-1617 | elliot@hughes-cre.com

6727 OAK RIDGE COMMERCE WAY AUSTELL, GA 30168

±36,275 SF TOTAL AVAILABLE | ±10 USABLE ACRES



All information contained herein is believed to be accurate but is not warranted. This offer is subject to errors, omissions, prior sale or withdrawal.



Hughes Commercial Real Estate, Inc.
8215 Roswell Road, Building 700
Atlanta, GA 30350
770-559-1099 | hughes-cre.com

Mason Marsteller | 404-790-9615 | mason@hughes-cre.com

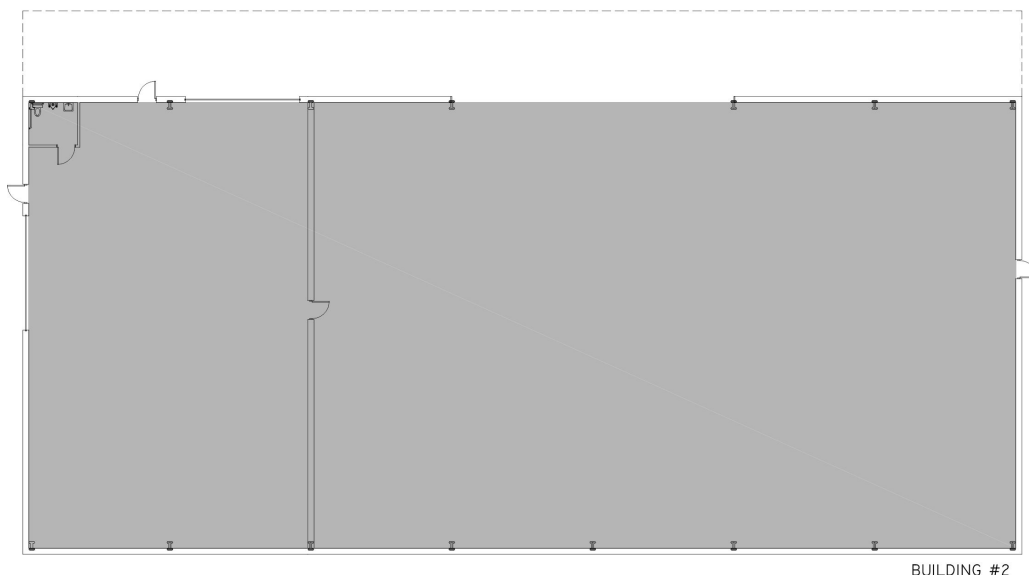
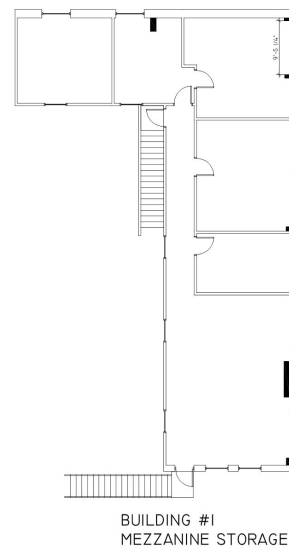
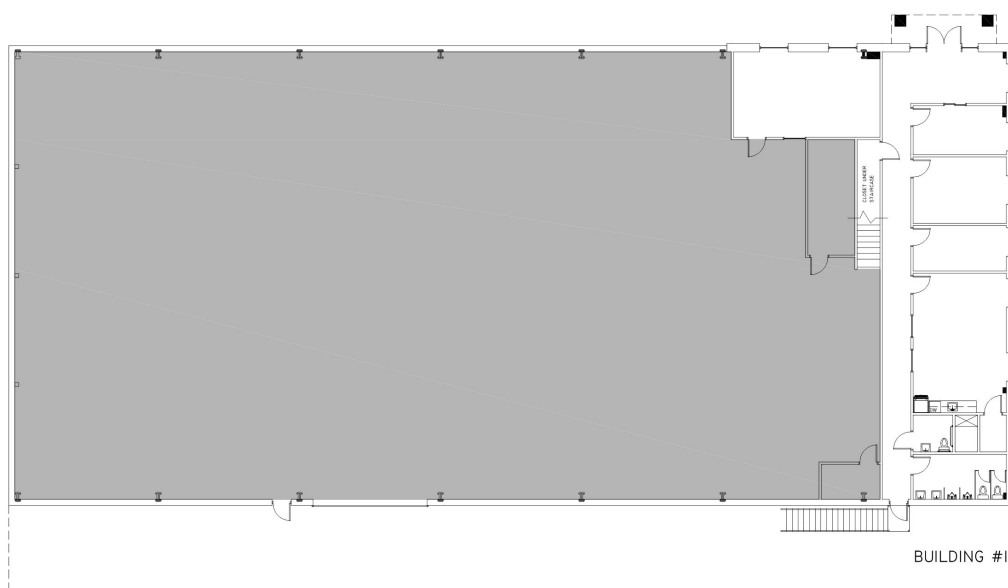
Elliott Stroud | 912-580-1617 | elliott@hughes-cre.com

6727 OAK RIDGE COMMERCE WAY AUSTELL, GA 30168

±36,275 SF TOTAL AVAILABLE | ±10 USABLE ACRES

FLOOR PLANS

6727 OAK RIDGE COMMERCE WAY, AUSTELL, GA 30168 • FULL SITE • 36,275 SF



- BUILDING #1**
- OFFICE: 5,474 SF
 - WAREHOUSE: 14,145 SF
 - TOTAL SF: 19,619

- BUILDING #2**
- WAREHOUSE: 16,656



All information contained herein is believed to be accurate but is not warranted. This offer is subject to errors, omissions, prior sale or withdrawal.



Hughes Commercial Real Estate, Inc.
8215 Roswell Road, Building 700
Atlanta, GA 30350
770-559-1099 | hughes-cre.com

Mason Marsteller | 404-790-9615 | mason@hughes-cre.com

Elliott Stroud | 912-580-1617 | elliot@hughes-cre.com