

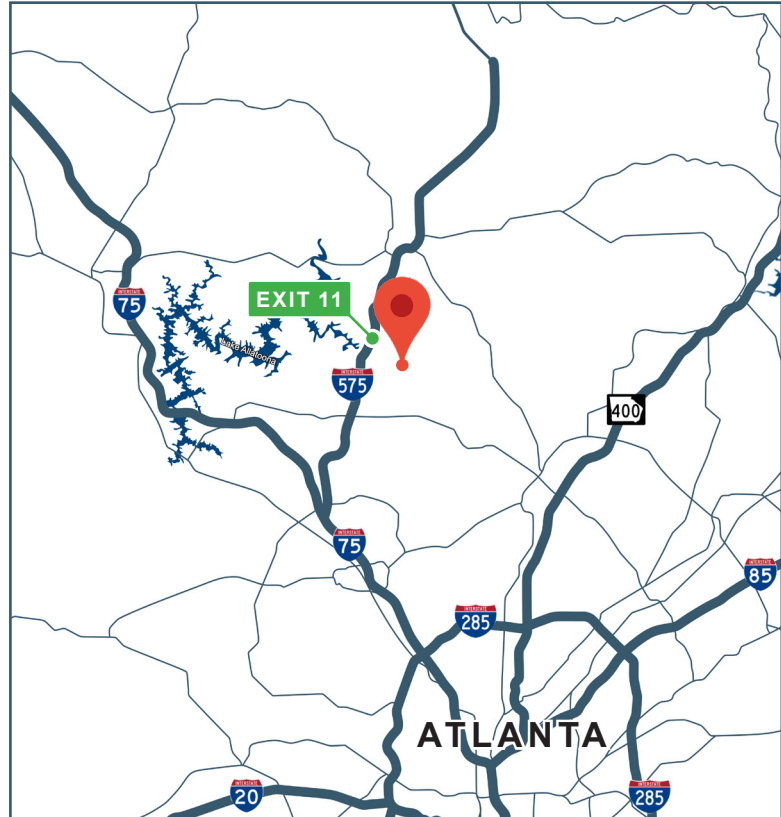
FOR SALE

6411 HOLLY SPRINGS PARKWAY, WOODSTOCK, GA 30188



PROPERTY INFORMATION

- 8,000 SF / 1.06 Acres
- Automotive Service and Repair
- 1,000 SF Office / Showroom
- Room for 12 Lift Bays
- 2 Oversize Powered Drive-in Doors
- Ample Front and Rear Parking
- Over 17,000 VPD
- \$108,492 Average Household Income Within 5 Miles
- Structural Concrete Slab
- Alignment Pit
- 1,000 Gallon Oil Separator Tank
- Income Producing Billboard
- 1,000 SF Load Bearing Mezzanine
- Two (2) Big Ass Fans
- January 2025 Occupancy



All information contained herein is believed to be accurate but is not warranted. This offer is subject to errors, omissions, prior sale or withdrawal.



Hughes Commercial Real Estate, Inc.
8215 Roswell Road, Building 700
Atlanta, GA 30350
770-559-1099 | hughes-cre.com

Cade McDonald
404-307-5166
cade@hughes-cre.com

FOR SALE

6411 HOLLY SPRINGS PARKWAY, WOODSTOCK, GA 30188



All information contained herein is believed to be accurate but is not warranted. This offer is subject to errors, omissions, prior sale or withdrawal.



Hughes Commercial Real Estate, Inc.
8215 Roswell Road, Building 700
Atlanta, GA 30350
770-559-1099 | hughes-cre.com

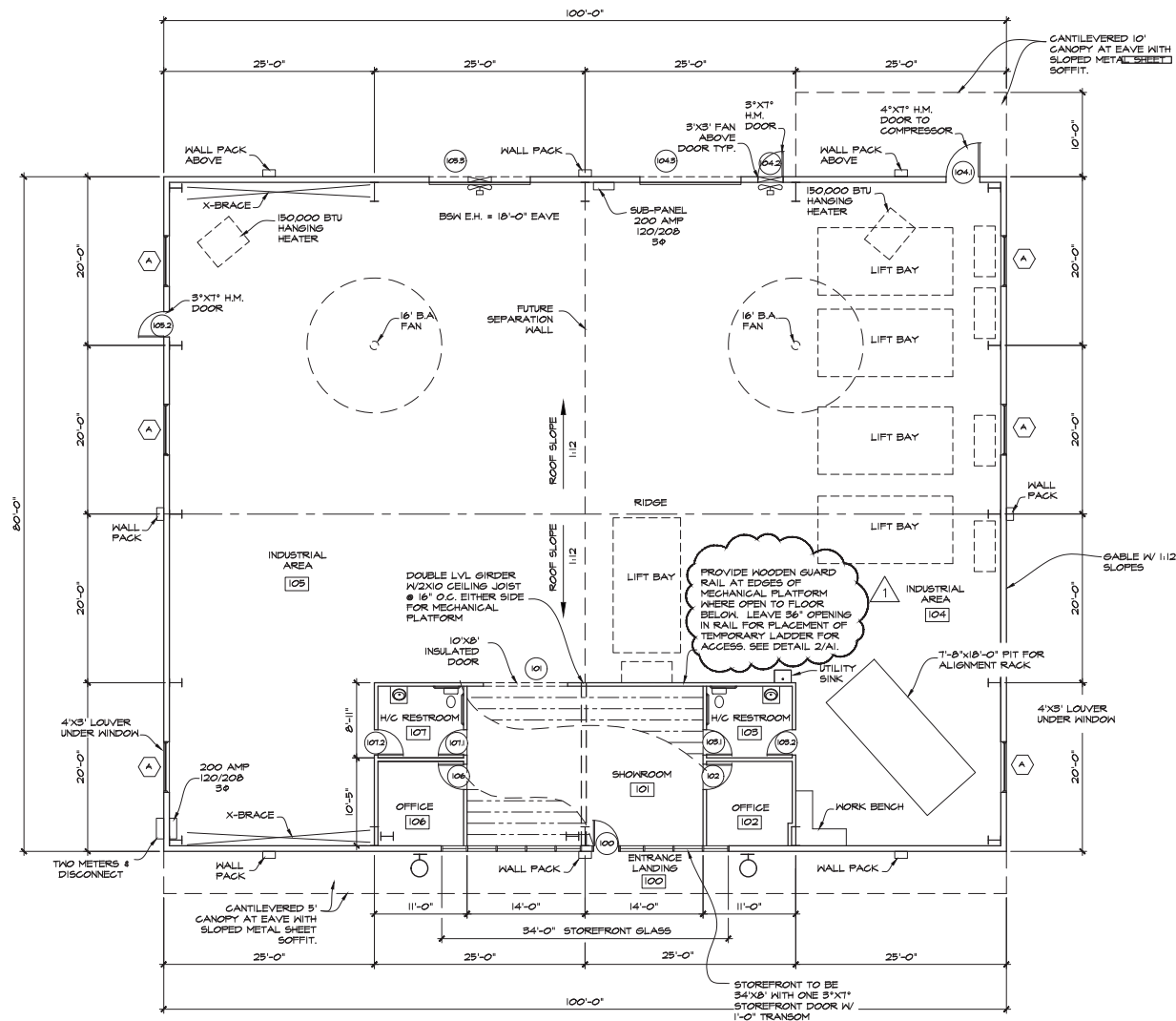
Cade McDonald
404-307-5166
cade@hughes-cre.com

6411 HOLLY SPRINGS PARKWAY, WOODSTOCK, GA 30188



FOR SALE

6411 HOLLY SPRINGS PARKWAY, WOODSTOCK, GA 30188



All information contained herein is believed to be accurate but is not warranted. This offer is subject to errors, omissions, prior sale or withdrawal.



Hughes Commercial Real Estate, Inc.
8215 Roswell Road, Building 700
Atlanta, GA 30350
770-559-1099 | hughes-cre.com

Cade McDonald

404-307-5166

cade@hughes-cre.com