

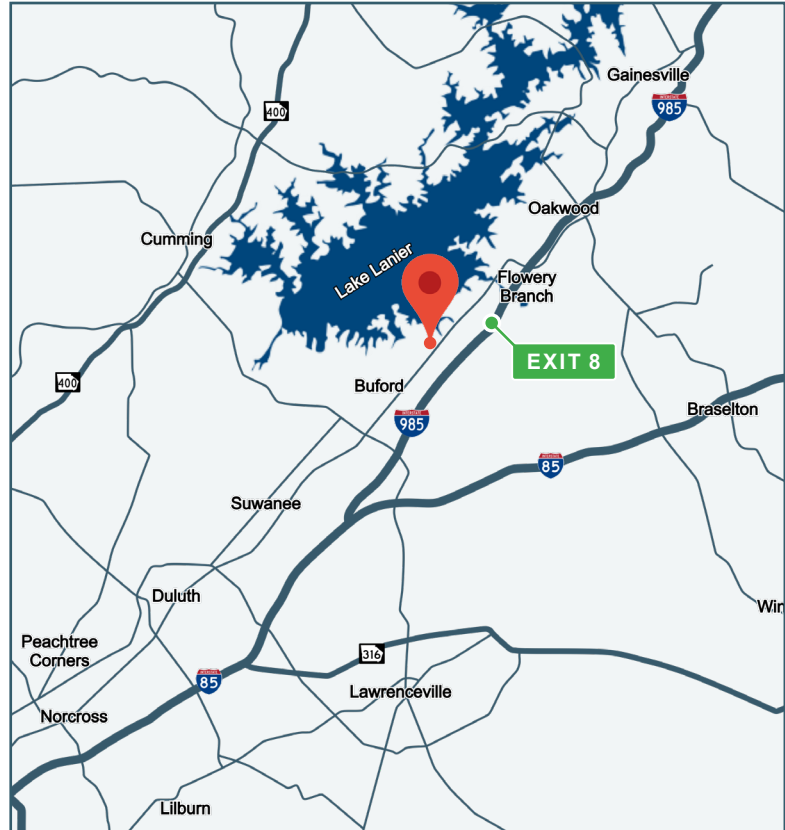
FOR LEASE

2956 S WATERWORKS ROAD | BUFORD, GA 30518



PROPERTY INFORMATION

TOTAL BUILDING SIZE	±12,500 SF
AVAILABLE SPACE	±2,500 - 7,500 SF <ul style="list-style-type: none">• RIGHT END CAP: ±2,500 SF<ul style="list-style-type: none">◦ 1 Oversized Drive-In Door◦ 1 Regular Drive-In Door• LEFT END CAP: ±5,000 SF<ul style="list-style-type: none">◦ 1 Oversized Drive-In Door◦ 1 Regular Drive-In Door◦ 1 Oversized Dock-High Door◦ 1 Regular Dock-High Door
CLEAR HEIGHT	18' - 20'
TRUCK COURT	125'
ZONING	M-1, Light Industrial
FENCED YARD	Yes
ACCESS	<ul style="list-style-type: none">• ±0.3 mi to McEver Rd• ±2.5 mi to I-985 (Exit 8)



All information contained herein is believed to be accurate but is not warranted. This offer is subject to errors, omissions, prior sale or withdrawal.



Hughes Commercial Real Estate, Inc.
8215 Roswell Road, Building 700
Atlanta, GA 30350
770-559-1099 | hughes-cre.com

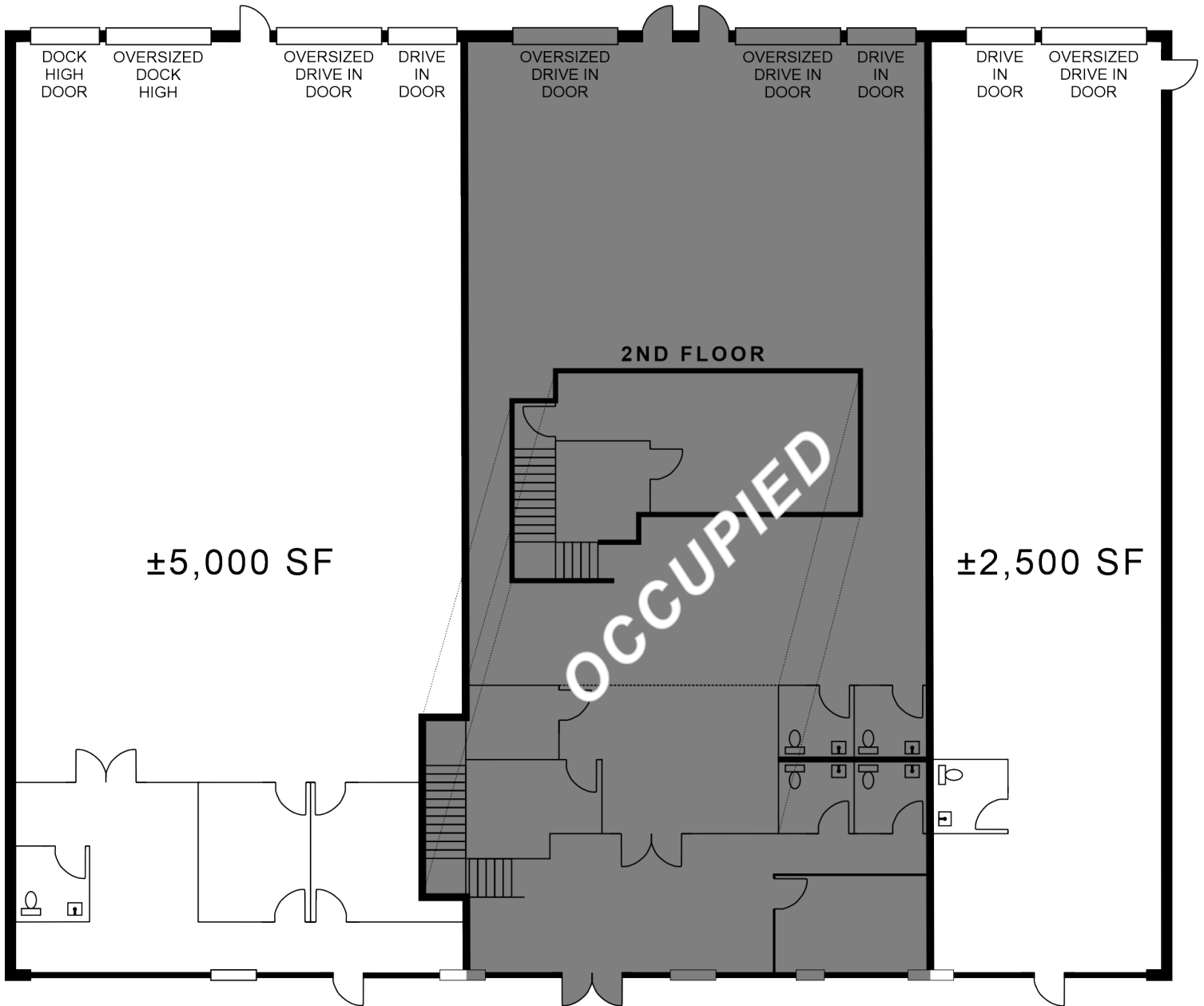
Weston Gurr
770-364-0078
weston@hughes-cre.com

Cade McDonald
404-307-5166
cade@hughes-cre.com

FOR LEASE

2956 S WATERWORKS ROAD | BUFORD, GA 30518

BUILDING LAYOUT



NOTE: Building Layout not drawn to scale. Building layout subject to change.

All information contained herein is believed to be accurate but is not warranted. This offer is subject to errors, omissions, prior sale or withdrawal.



Hughes Commercial Real Estate, Inc.
8215 Roswell Road, Building 700
Atlanta, GA 30350
770-559-1099 | hughes-cre.com

Weston Gurr
770-364-0078
weston@hughes-cre.com

Cade McDonald
404-307-5166
cade@hughes-cre.com

FOR LEASE

2956 S WATERWORKS ROAD | BUFORD, GA 30518



All information contained herein is believed to be accurate but is not warranted. This offer is subject to errors, omissions, prior sale or withdrawal.



Hughes Commercial Real Estate, Inc.
8215 Roswell Road, Building 700
Atlanta, GA 30350
770-559-1099 | hughes-cre.com

Weston Gurr
770-364-0078
weston@hughes-cre.com

Cade McDonald
404-307-5166
cade@hughes-cre.com