

# OAKBROOK TECH CENTER

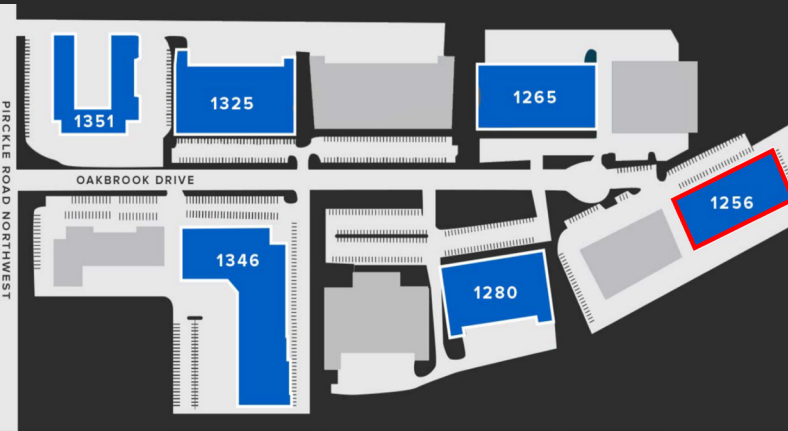
1256 OAKBROOK DRIVE | NORCROSS, GA 30093

## PROPERTY INFORMATION

- 40,340 SF Rear Load Industrial/Flex Building
- **5,025 - 10,089 SF Available**
  - Suite D: 5,064 SF
  - Suite E: 5,025 SF
  - Suite D & E: 10,089 SF
- Dock-High & Drive-In Loading
- ±19' Clear Height
- Abundant Parking
- Proactive Institutional Ownership
- Excellent access to Jimmy Carter Blvd, Peachtree Industrial Blvd, I-85 and I-285
- Ideal Norcross location in close proximity to numerous restaurants, shops, and local amenities



## OAKBROOK TECH CENTER



All information contained herein is believed to be accurate but is not warranted. This offer is subject to errors, omissions, prior sale or withdrawal.



**Hughes Commercial Real Estate, Inc.**  
8215 Roswell Road, Building 700  
Atlanta, GA 30350  
770-559-1099 | [hughes-cre.com](http://hughes-cre.com)

**Matt Nelsen**  
404-431-0971  
[matt@hughes-cre.com](mailto:matt@hughes-cre.com)

Owned By:

**AGELLAN**  
COMMERCIAL REIT



# OAKBROOK

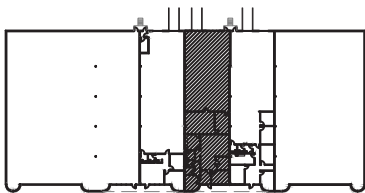
TECH CENTER

FOR LEASE | BUILDING 1256 | SUITE D | 5,064 SF

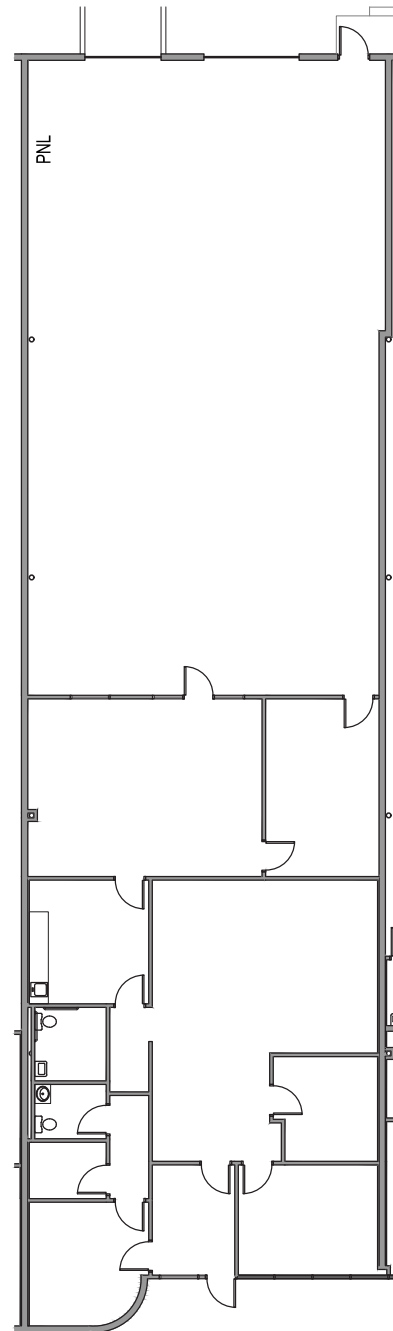
## FLOOR PLAN

### SUITE INFORMATION

- 5,064 SF Suite
- ±2,564 SF Office
- ±2,500 SF Warehouse
- One (1) Dock-High Door
- One (1) Drive-In Door



KEY PLAN



All information contained herein is believed to be accurate but is not warranted. This offer is subject to errors, omissions, prior sale or withdrawal.



**Hughes Commercial Real Estate, Inc.**  
8215 Roswell Road, Building 700  
Atlanta, GA 30350  
770-559-1099 | [hughes-cre.com](http://hughes-cre.com)

**Matt Nelsen**  
404-431-0971  
[matt@hughes-cre.com](mailto:matt@hughes-cre.com)

Owned By:





# OAKBROOK

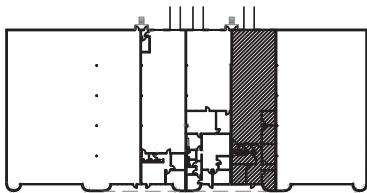
TECH CENTER

FOR LEASE | BUILDING 1256 | SUITE E | 5,025 SF

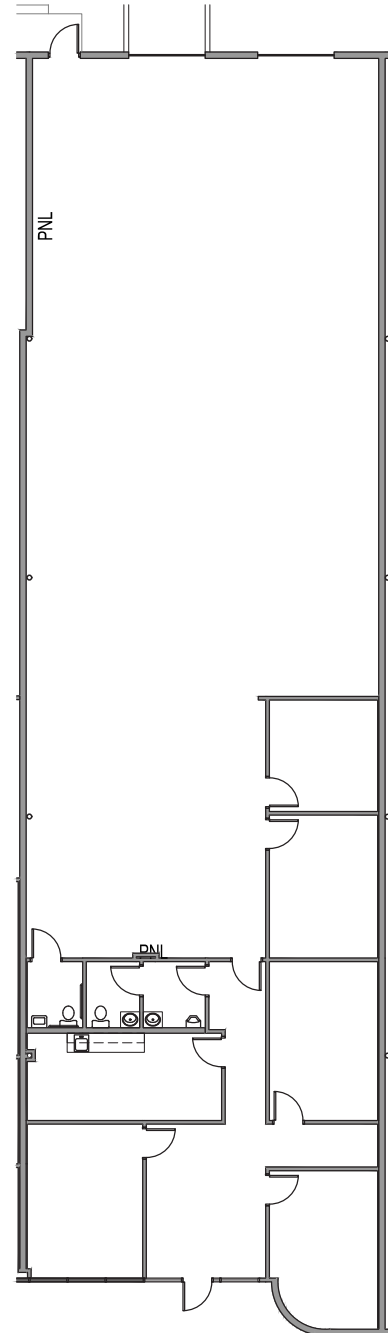
## FLOOR PLAN

### SUITE INFORMATION

- 5,025 SF Suite
- ±2,250 SF Office
- ±2,775 SF Warehouse
- One (1) Dock-High Door
- One (1) Drive-In Door



KEY PLAN



All information contained herein is believed to be accurate but is not warranted. This offer is subject to errors, omissions, prior sale or withdrawal.



**Hughes Commercial Real Estate, Inc.**  
8215 Roswell Road, Building 700  
Atlanta, GA 30350  
770-559-1099 | [hughes-cre.com](http://hughes-cre.com)

**Matt Nelsen**  
404-431-0971  
[matt@hughes-cre.com](mailto:matt@hughes-cre.com)

Owned By:





# OAKBROOK

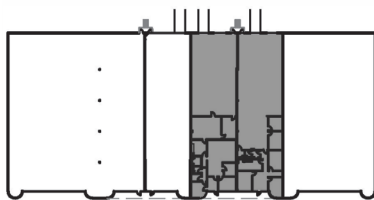
## TECH CENTER

FOR LEASE | BUILDING 1256 | SUITE D & E | 10,089 SF

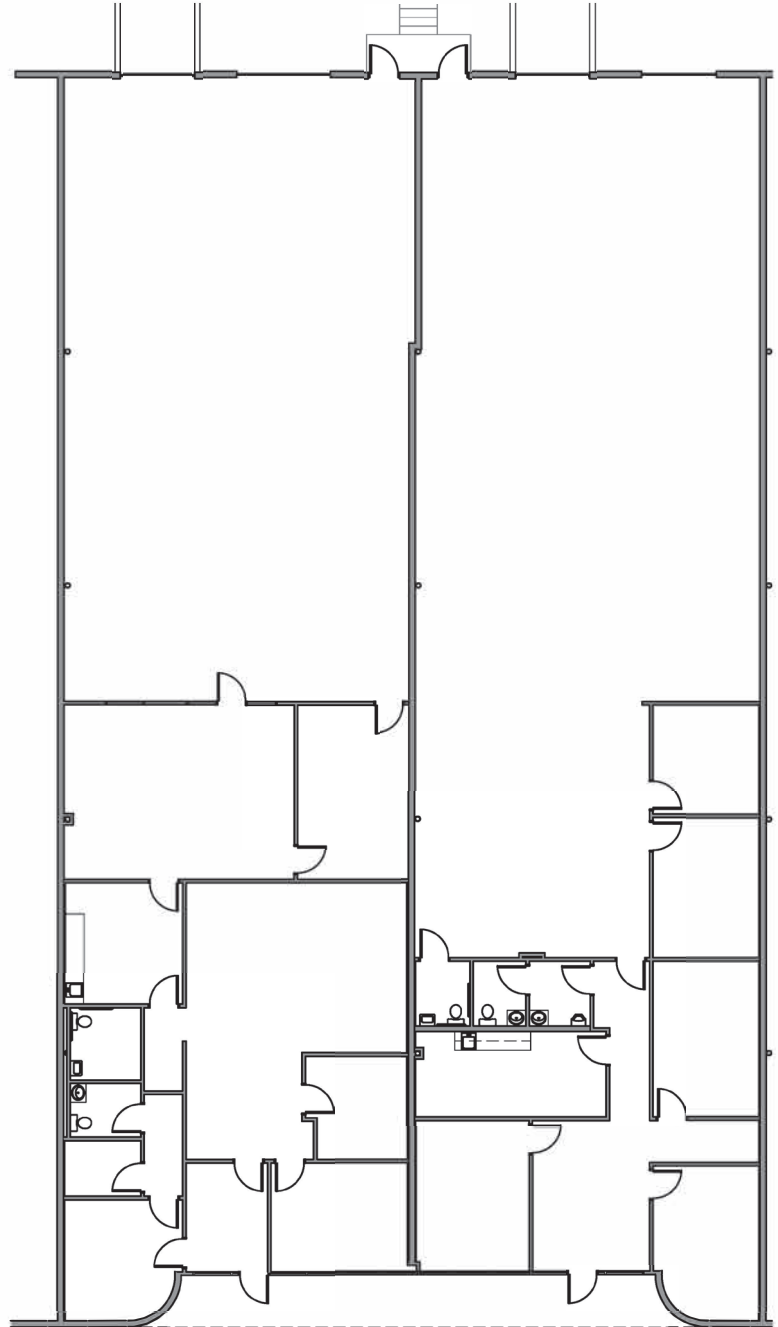
### FLOOR PLAN

### SUITE INFORMATION

- 10,089 SF Suite
- ±4,814 SF Office
- ±5,275 SF Warehouse
- Two (2) Dock-High Doors
- Two (2) Drive-In Doors



KEY PLAN



All information contained herein is believed to be accurate but is not warranted. This offer is subject to errors, omissions, prior sale or withdrawal.



**Hughes Commercial Real Estate, Inc.**  
8215 Roswell Road, Building 700  
Atlanta, GA 30350  
770-559-1099 | [hughes-cre.com](http://hughes-cre.com)

**Matt Nelsen**  
404-431-0971  
[matt@hughes-cre.com](mailto:matt@hughes-cre.com)

Owned By:

