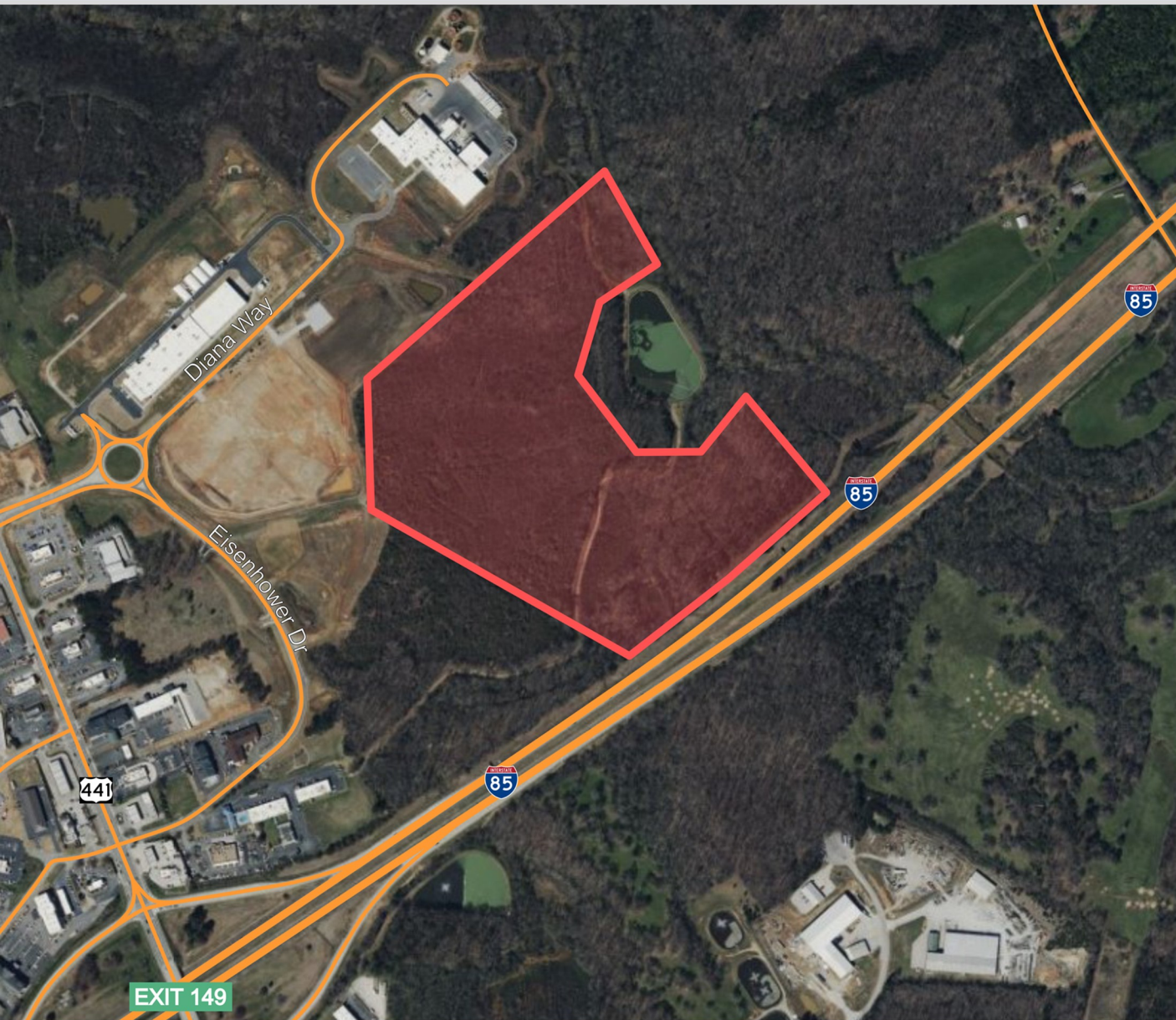


# EISENHOWER DRIVE

COMMERCE, GEORGIA 30529



## FOR SALE

### +/- 50.8 Acres

#### PROPERTY INFORMATION

- Zoned C-2 General Commercial but can be rezoned industrial
- I-85 Frontage (Traffic Count: 61,900 cars per day)
- Immediate access to I-85 via full diamond interchange at Highway 441 (Exit 149)
- Water, electric, and sewer available
- Gentle topography
- Can be assembled with adjoining parcel for +/- 75 acres total
- Close proximity to SK Battery Plant and other industrial developments
- Immediate access within minutes to numerous area amenities at Tanger Outlets/Banks Crossing

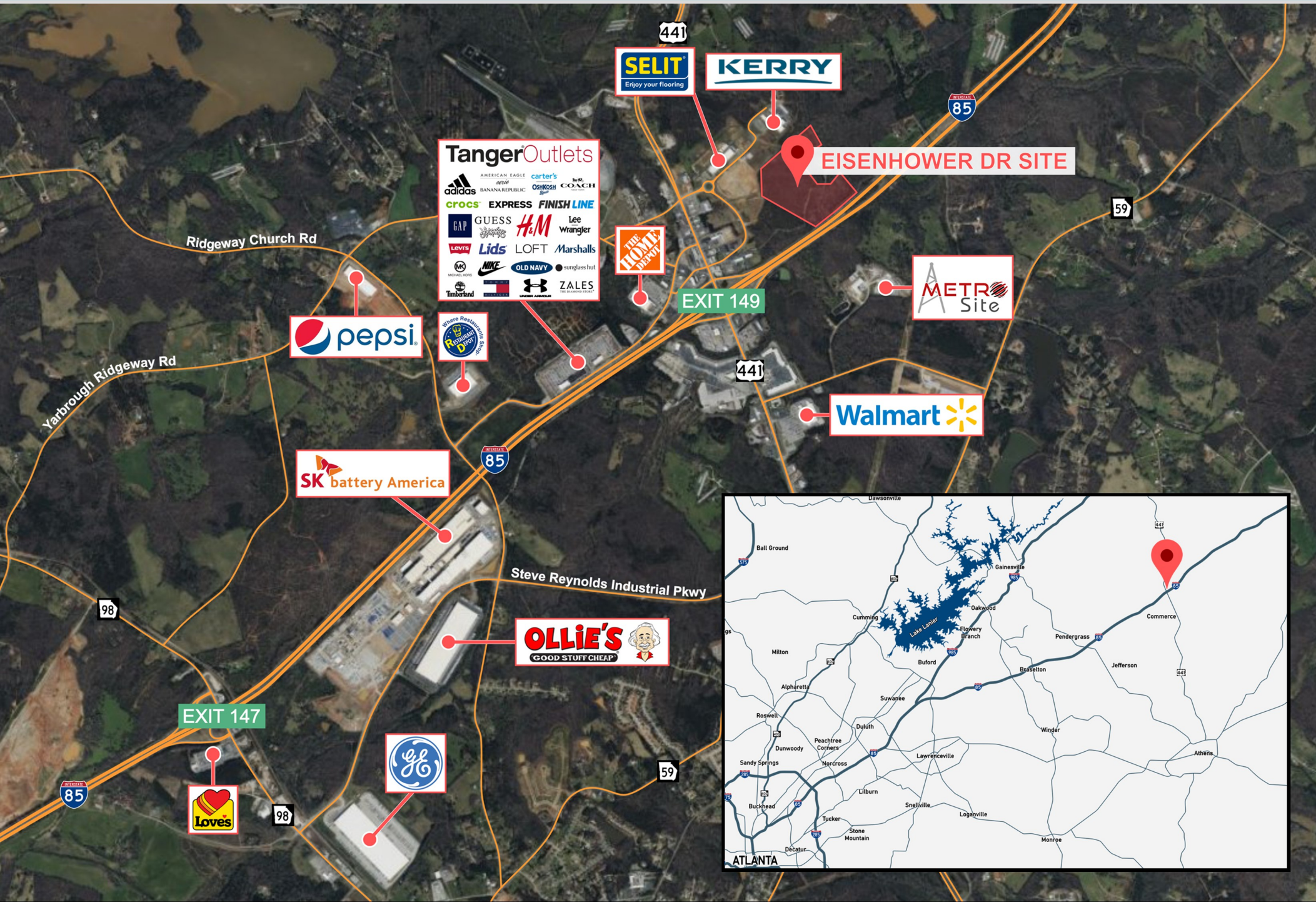


**Hughes Commercial Real Estate, Inc.**  
8215 Roswell Road, Building 700  
Atlanta, GA 30350  
770-559-1099 | [hughes-cre.com](http://hughes-cre.com)

**Matt Nelsen**  
404-431-0971

[matt@hughes-cre.com](mailto:matt@hughes-cre.com)

# LOCAL AREA MAP



# POTENTIAL ASSEMBLAGE

**+/- 75 Acres**



441

Diana Way

Eisenhower Dr

441

E Ridgeway Rd

EXIT 149

85

85

85