



OAKBROOK

TECH CENTER

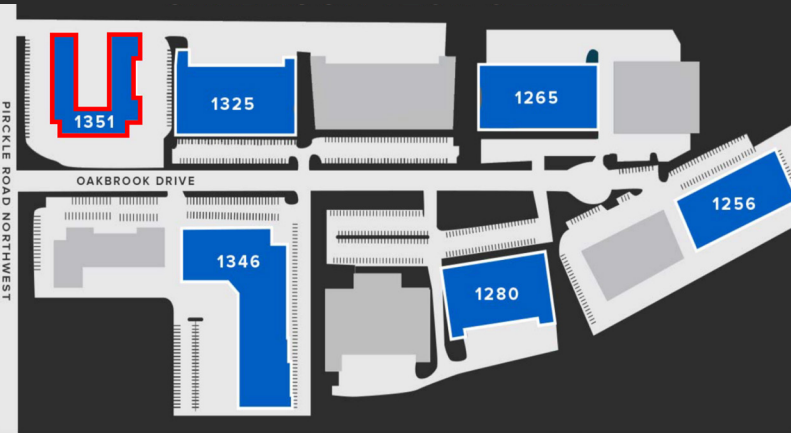
1351 OAKBROOK DRIVE | NORCROSS, GA 30093

PROPERTY INFORMATION

- 32,322 SF Rear Load Industrial/Flex Building
- **2,210 - 4,587 SF Available**
 - Suite 170: 4,587 SF
 - Suite 180: 2,333 SF
- Drive-In Loading
- ±14' Clear Height
- Abundant Parking
- Proactive Institutional Ownership
- Excellent access to Jimmy Carter Blvd, Peachtree Industrial Blvd, I-85 and I-285
- Ideal Norcross location in close proximity to numerous restaurants, shops, and local amenities



OAKBROOK TECH CENTER



All information contained herein is believed to be accurate but is not warranted. This offer is subject to errors, omissions, prior sale or withdrawal.



Hughes Commercial Real Estate, Inc.
8215 Roswell Road, Building 700
Atlanta, GA 30350
770-559-1099 | hughes-cre.com

Matt Nelsen
404-431-0971
matt@hughes-cre.com

Owned By:



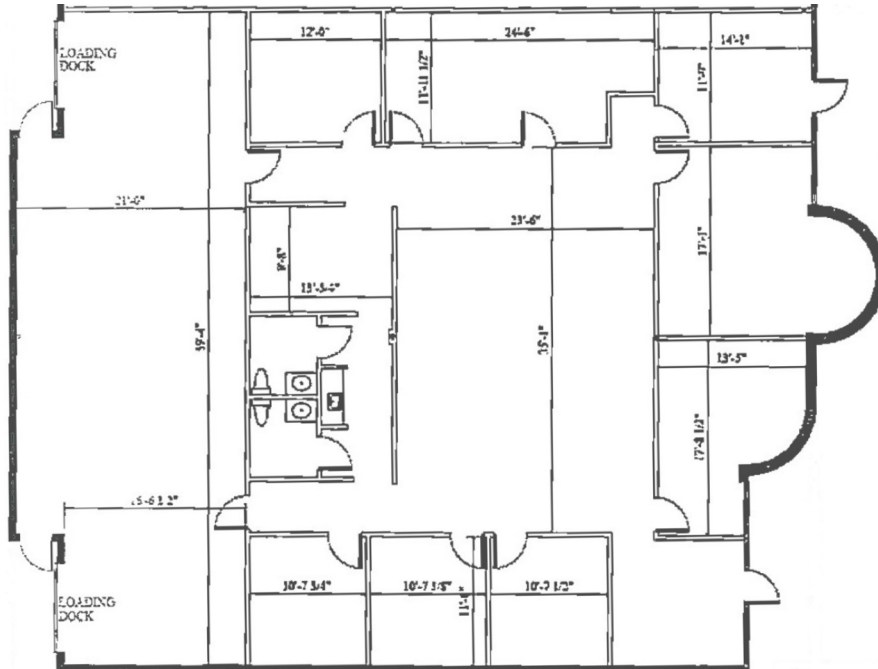


OAKBROOK

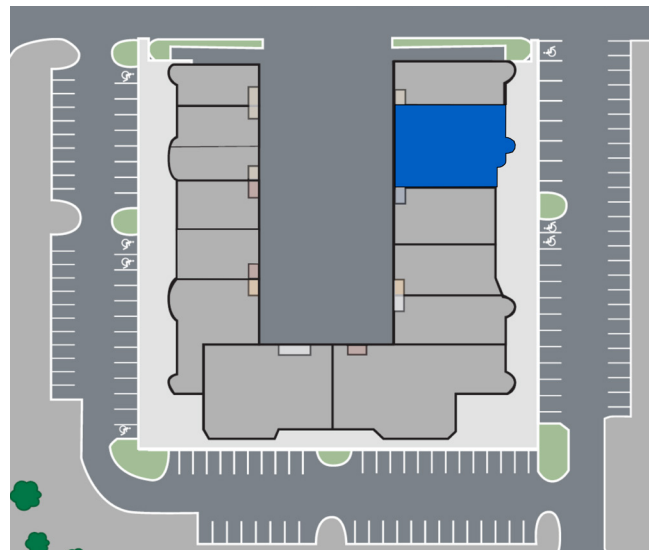
TECH CENTER

BUILDING 1351 | SUITE 170 | 4,587 SF

FLOOR PLAN



KEY PLAN



SUITE INFORMATION

- 4,587 SF Suite
- 3,437 SF Office
- 1,150 SF Warehouse
- Two (2) Drive-In Doors

All information contained herein is believed to be accurate but is not warranted. This offer is subject to errors, omissions, prior sale or withdrawal.



Hughes Commercial Real Estate, Inc.
8215 Roswell Road, Building 700
Atlanta, GA 30350
770-559-1099 | hughes-cre.com

Matt Nelsen
404-431-0971
matt@hughes-cre.com

Owned By:



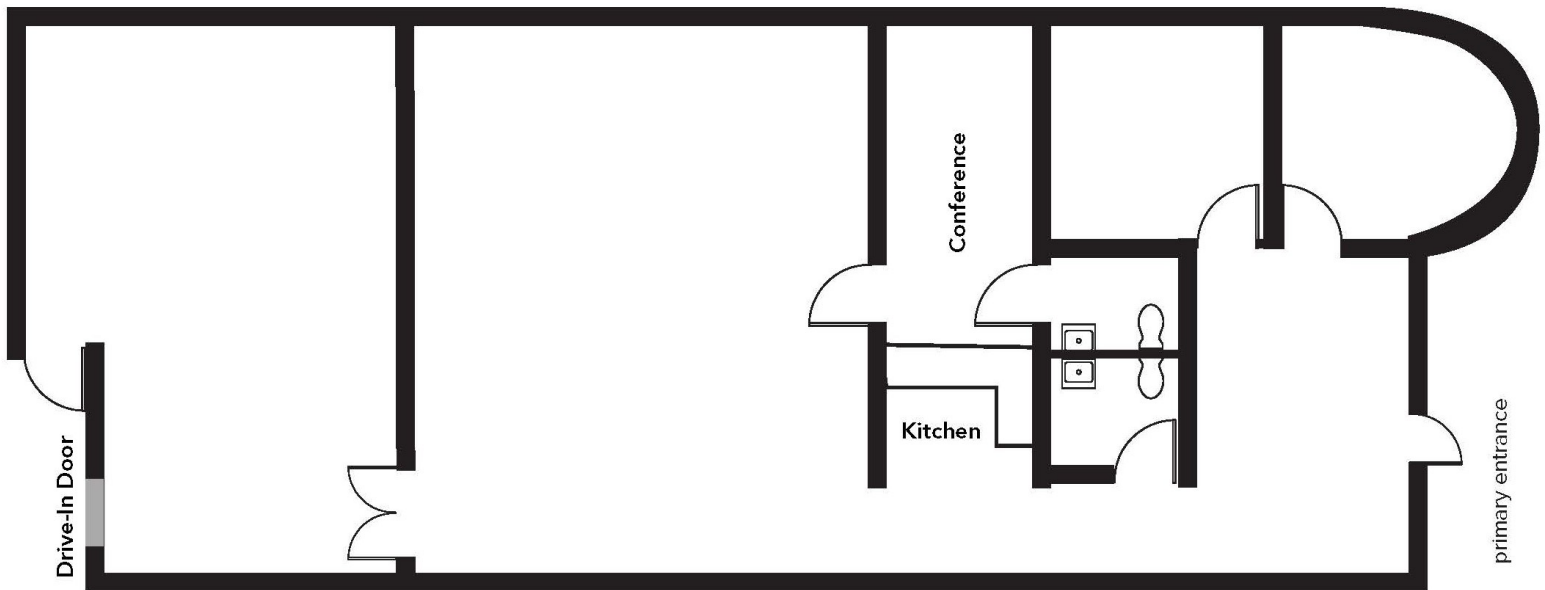


OAKBROOK

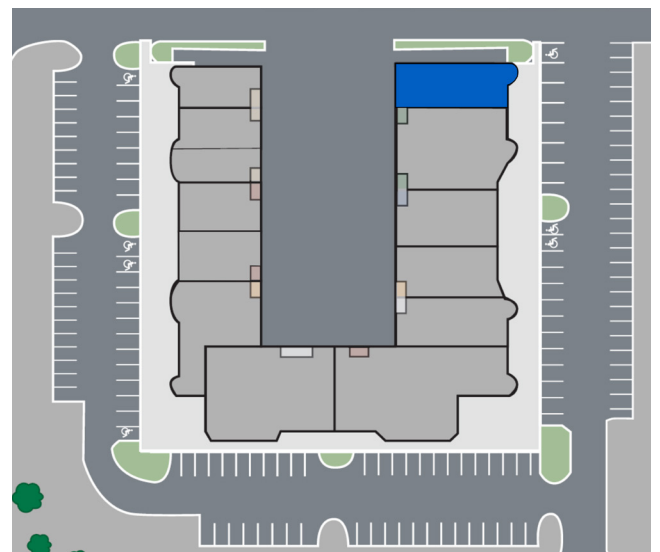
TECH CENTER

BUILDING 1351 | SUITE 180 | 2,333 SF

FLOOR PLAN



KEY PLAN



SUITE INFORMATION

- 2,333 SF Suite
- 1,833 SF Office
- 500 SF Warehouse
- One (1) Drive-In Door

All information contained herein is believed to be accurate but is not warranted. This offer is subject to errors, omissions, prior sale or withdrawal.



Hughes Commercial Real Estate, Inc.
8215 Roswell Road, Building 700
Atlanta, GA 30350
770-559-1099 | hughes-cre.com

Matt Nelsen
404-431-0971
matt@hughes-cre.com

Owned By:

