

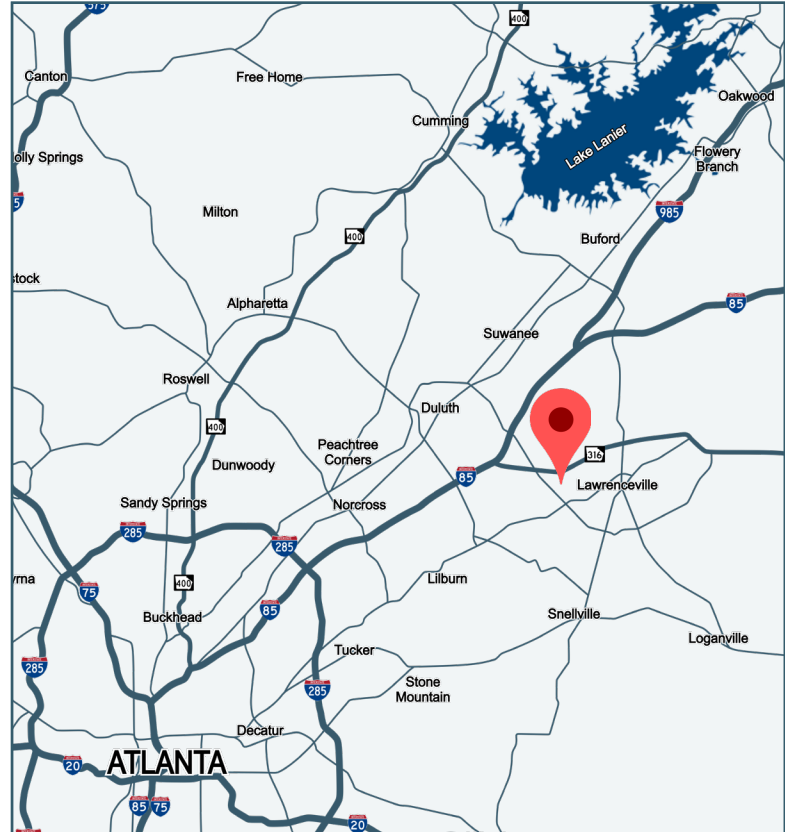
FOR SUBLEASE

1075 OLD NORCROSS ROAD
SUITE S
LAWRENCEVILLE, GA 30043



PROPERTY INFORMATION

- **Suite S Available - 11,488 SF**
 - +/-6,600 SF Office
 - +/-4,888 SF Warehouse
 - Two (2) Dock-High Doors
 - One (1) Drive-In Door
 - 100% HVAC in Warehouse
 - Sublease Term Expires 10/31/2026
- 24' Clear Height
- 100' Truck Court
- Sprinklered
- Prime location in the I-85 / Northeast Submarket with convenient access to Metro Atlanta:
 - +/-1 mile to GA-316
 - +/-5 miles to I-85



Hughes Commercial Real Estate, Inc.
8215 Roswell Road, Building 700
Atlanta, GA 30350
770-559-1099 | hughes-cre.com

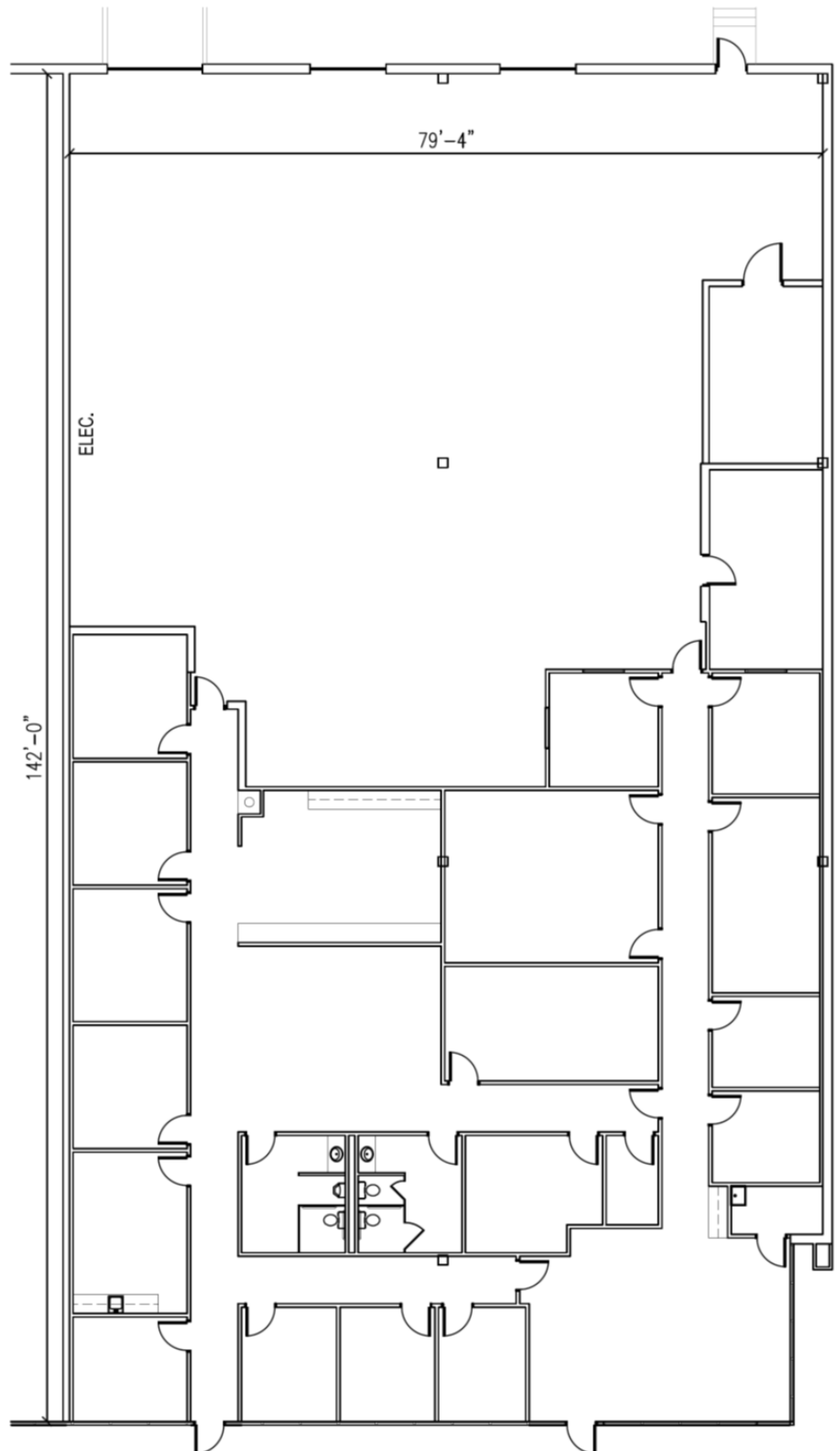
Matt Nelsen
404-431-0971
matt@hughes-cre.com

All information contained herein is believed to be accurate but is not warranted. This offer is subject to errors, omissions, prior sale or withdrawal.

FOR SUBLEASE

1075 OLD NORCROSS ROAD
SUITE S
LAWRENCEVILLE, GA 30043

FLOOR PLAN



SUITE S

Suite Size:	11,488 SF
Office Size:	+/-6,600 SF
Warehouse Size:	+/-4,888 SF
Dock-High Doors:	2
Drive-In Doors:	1
Clear Height:	24'



Hughes Commercial Real Estate, Inc.
8215 Roswell Road, Building 700
Atlanta, GA 30350
770-559-1099 | hughes-cre.com

Matt Nelsen
404-431-0971
matt@hughes-cre.com

All information contained herein is believed to be accurate but is not warranted. This offer is subject to errors, omissions, prior sale or withdrawal.