

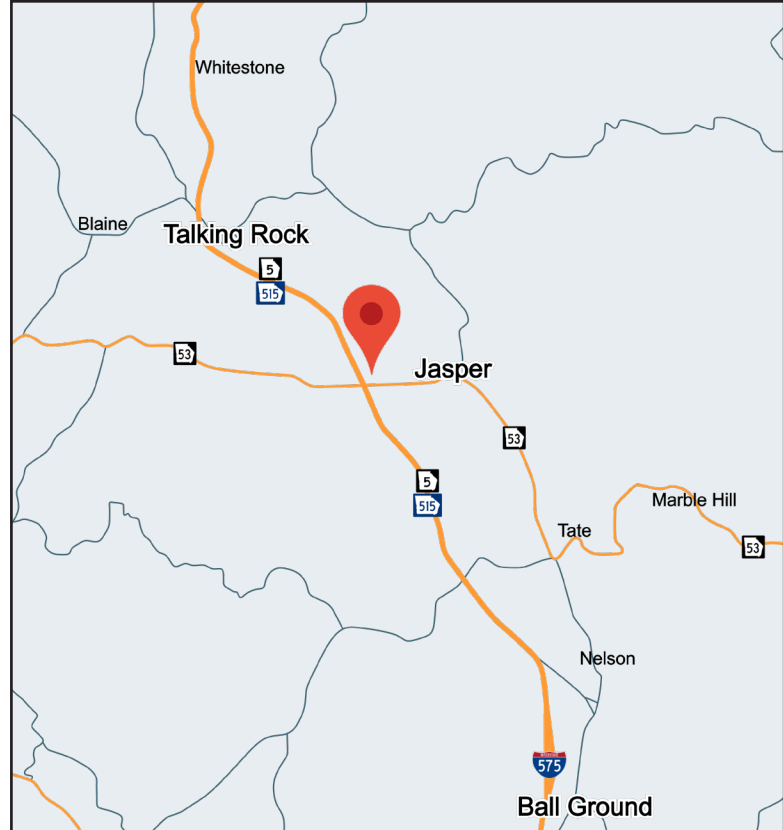
# FOR SALE

282 CONFEDERATE AVENUE  
JASPER, GA 30143



## PROPERTY INFORMATION

- Excellent Owner / User Opportunity
- +/-16,400 SF Industrial Building
- Metal Building
- Three (3) Roll Up Doors
- One (1) External Dock
- Interior includes Mezzanine Office
- 16' Clear Height
- 3 Phase Heavy Power
- +/-1.55 Acre Lot
- C-2 (General Commercial) Zoning by the City of Jasper
- +/-0.7 mile to GA Highway 515 / SR 5
- +/-2 miles to Downtown Jasper
- Paint Booths & Conveyor System to be removed
- January 2024 Occupancy



Hughes Commercial Real Estate, Inc.  
8215 Roswell Road, Building 700  
Atlanta, GA 30350  
770-559-1099 | hughes-cre.com

Cade McDonald

404-307-5166

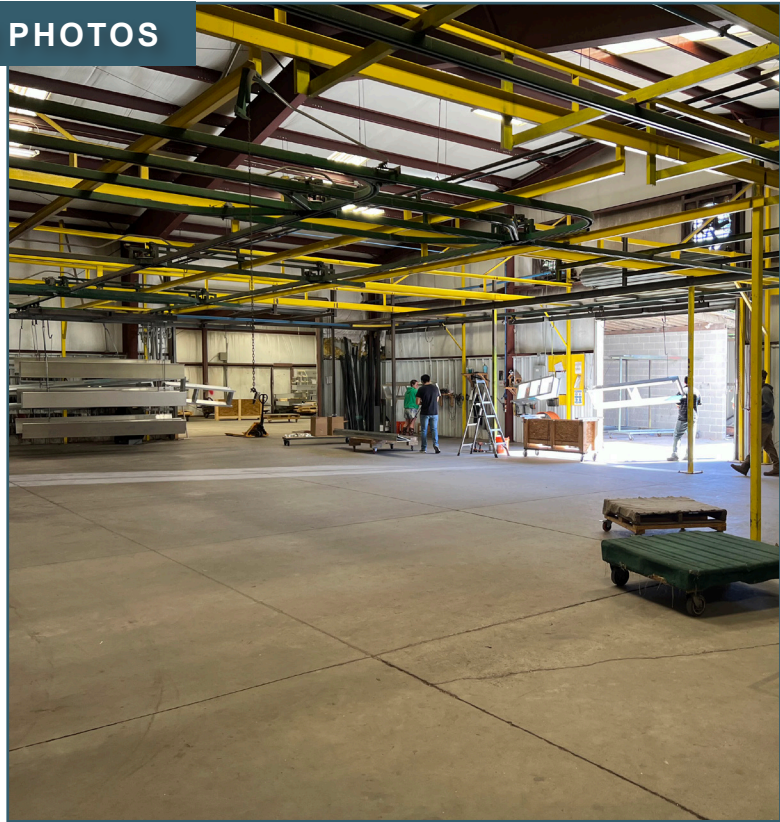
cade@hughes-cre.com

All information contained herein is believed to be accurate but is not warranted. This offer is subject to errors, omissions, prior sale or withdrawal.

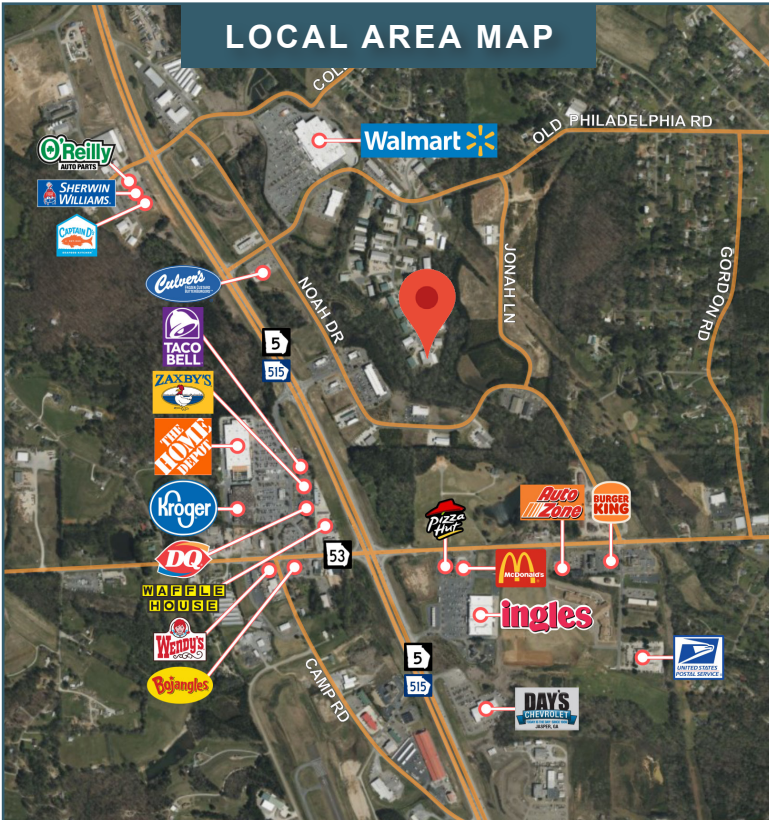
# FOR SALE

282 CONFEDERATE AVENUE  
JASPER, GA 30143

## INTERIOR PHOTOS



## LOCAL AREA MAP



## TAX PLAT MAP



Hughes Commercial Real Estate, Inc.  
8215 Roswell Road, Building 700  
Atlanta, GA 30350  
770-559-1099 | hughes-cre.com

Cade McDonald  
404-307-5166  
cade@hughes-cre.com

All information contained herein is believed to be accurate but is not warranted. This offer is subject to errors, omissions, prior sale or withdrawal.