

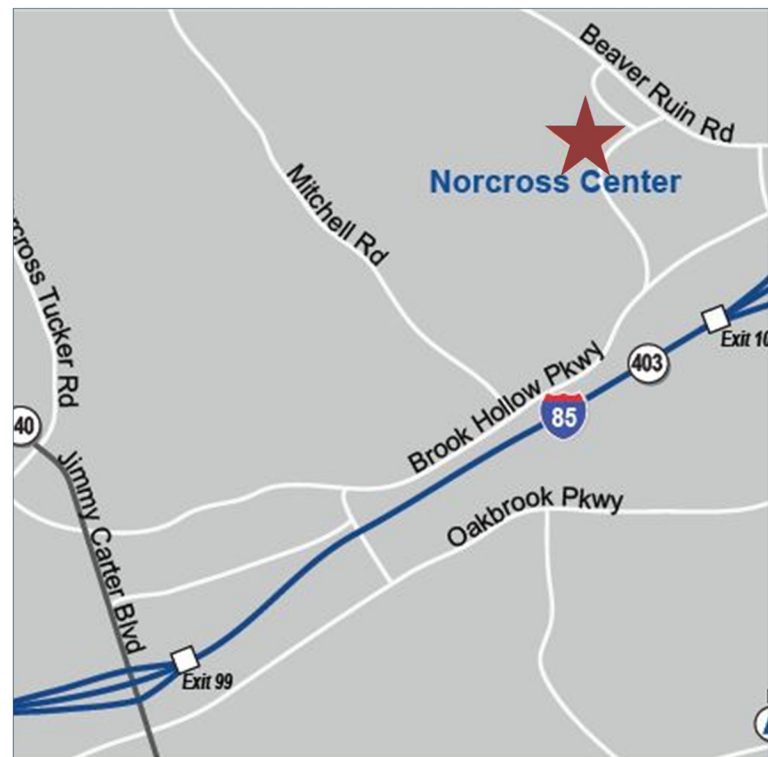
FOR LEASE

NORCROSS CENTER
2100-2200 NORCROSS PARKWAY
NORCROSS, GA 30071



PROPERTY INFORMATION

- 4,968 - 15,999 SF Available
- Proactive Ownership
- Move-in ready suites
- 20' minimum clear height
- T-5 lighting in warehouse
- Sprinklered
- Dock-High and Drive-In Loading
- Spacious Truck Courts
- Immediate access to I-85 and I-285
- Corporate Business Park Environment



Hughes Commercial Real Estate, Inc.
8215 Roswell Road, Building 700
Atlanta, GA 30350
770-559-1099

Matt Nelsen
404-431-0971
matt@hughes-cre.com

Owned by:



FOR LEASE

NORCROSS CENTER
2100-2200 NORCROSS PARKWAY
NORCROSS, GA 30071

CURRENT AVAILABILITIES

Building	Suite	Available SF	Office SF	Clear Height	Dock Doors
2200 Norcross Parkway	200	6,984	+/-2,753	20'	1 DH, 1 DI
2200 Norcross Parkway	235	4,968	+/-1,000	20'	2 DH
2200 Norcross Parkway	240	11,031	+/-1,200	20'	2 DH, 1 DI
2200 Norcross Parkway	235 & 240	15,999	+/-4,000	20'	4 DH, 1 DI
2200 Norcross Parkway	250	6,400	1,549	20'	1 DH

2100 Norcross Parkway



2200 Norcross Parkway



Hughes Commercial Real Estate, Inc.
8215 Roswell Road, Building 700
Atlanta, GA 30350
770-559-1099

Matt Nelsen
404-431-0971
matt@hughes-cre.com

Owned by:



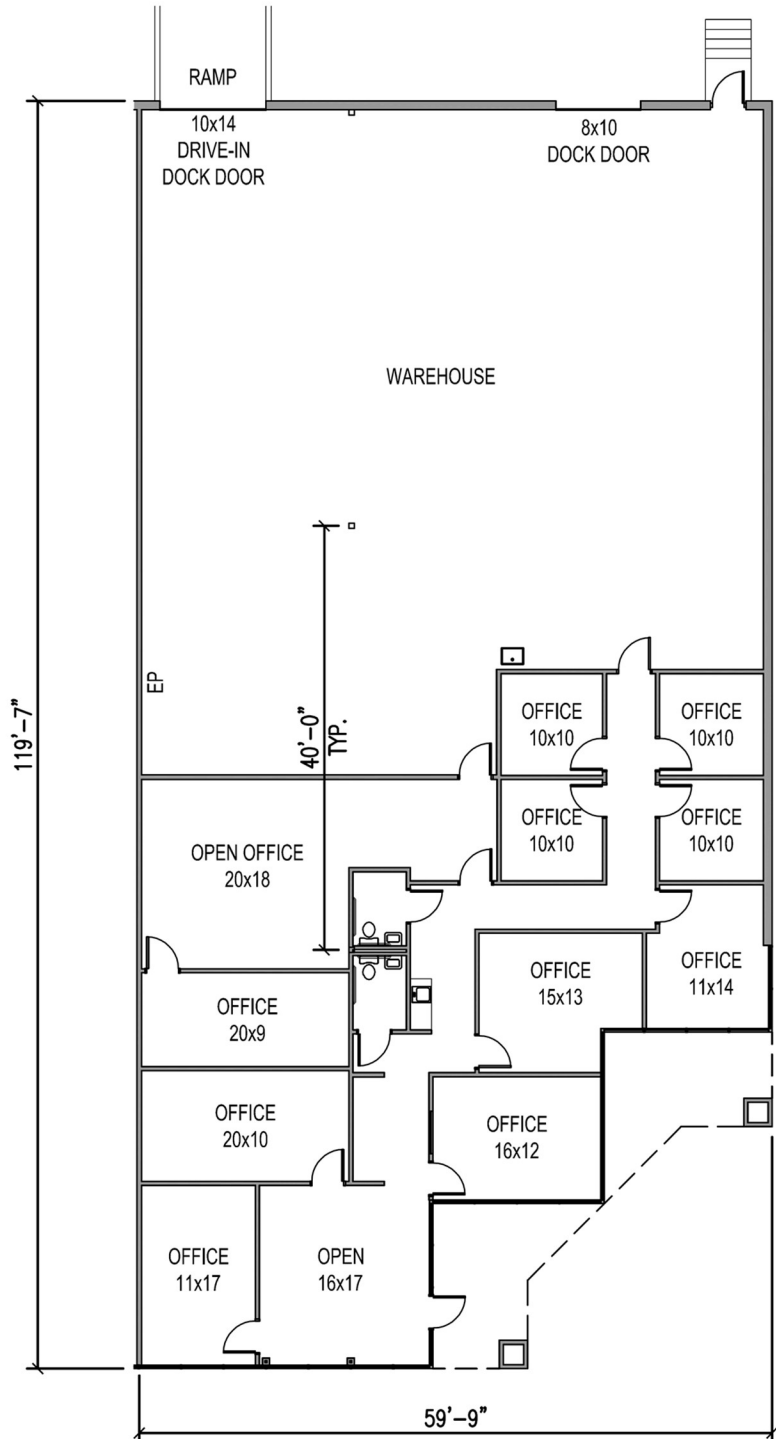
FOR LEASE

NORCROSS CENTER
2100-2200 NORCROSS PARKWAY
NORCROSS, GA 30071

FLOOR PLAN | 2200 NORCROSS PARKWAY | SUITE 200 | 6,984 SF

SUITE INFORMATION

6,984 SF Available
+/- 2,753 SF Office
+/- 4,231 SF Warehouse
One (1) Dock High Door
One (1) Drive In Door
End Cap Suite



Hughes Commercial Real Estate, Inc.
8215 Roswell Road, Building 700
Atlanta, GA 30350
770-559-1099

Matt Nelsen
404-431-0971
matt@hughes-cre.com

Owned by:
AGELLAN
COMMERCIAL REIT

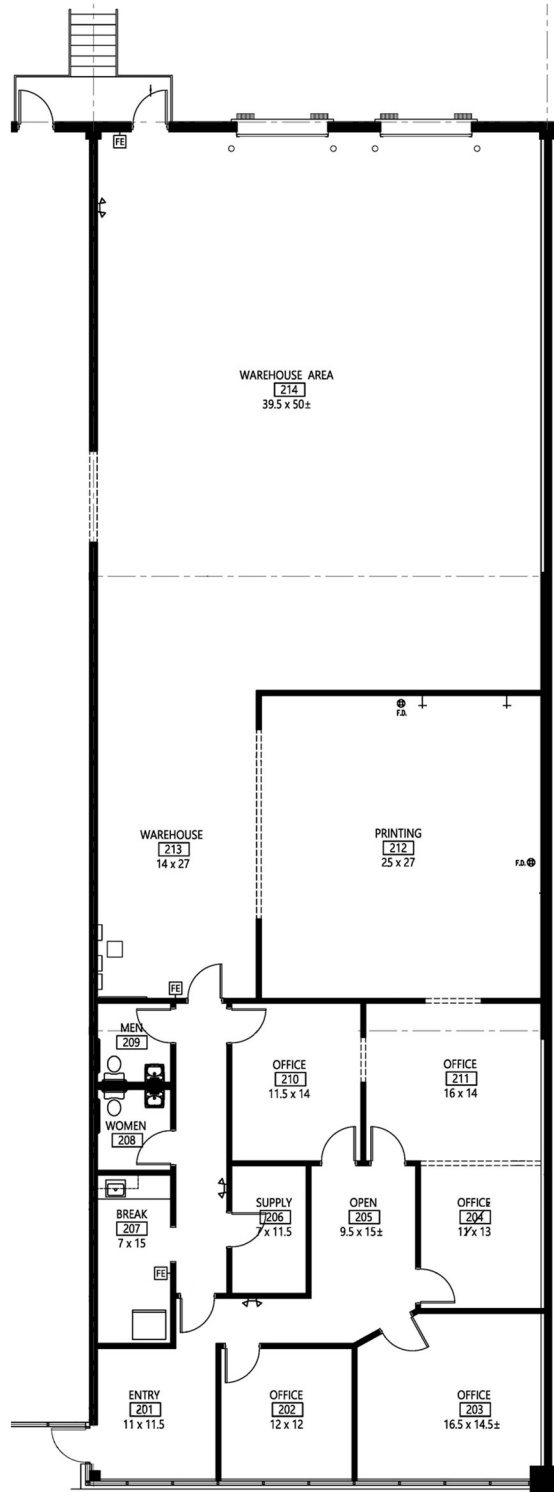
FOR LEASE

NORCROSS CENTER
2100-2200 NORCROSS PARKWAY
NORCROSS, GA 30071

FLOOR PLAN | 2200 NORCROSS PARKWAY | SUITE 235 | 4,968 SF

SUITE INFORMATION

4,968 SF Available
+/-1,000 SF Office
+/-3,968 SF Warehouse
Two (2) Dock High Door



Hughes Commercial Real Estate, Inc.
8215 Roswell Road, Building 700
Atlanta, GA 30350
770-559-1099

Matt Nelsen
404-431-0971
matt@hughes-cre.com

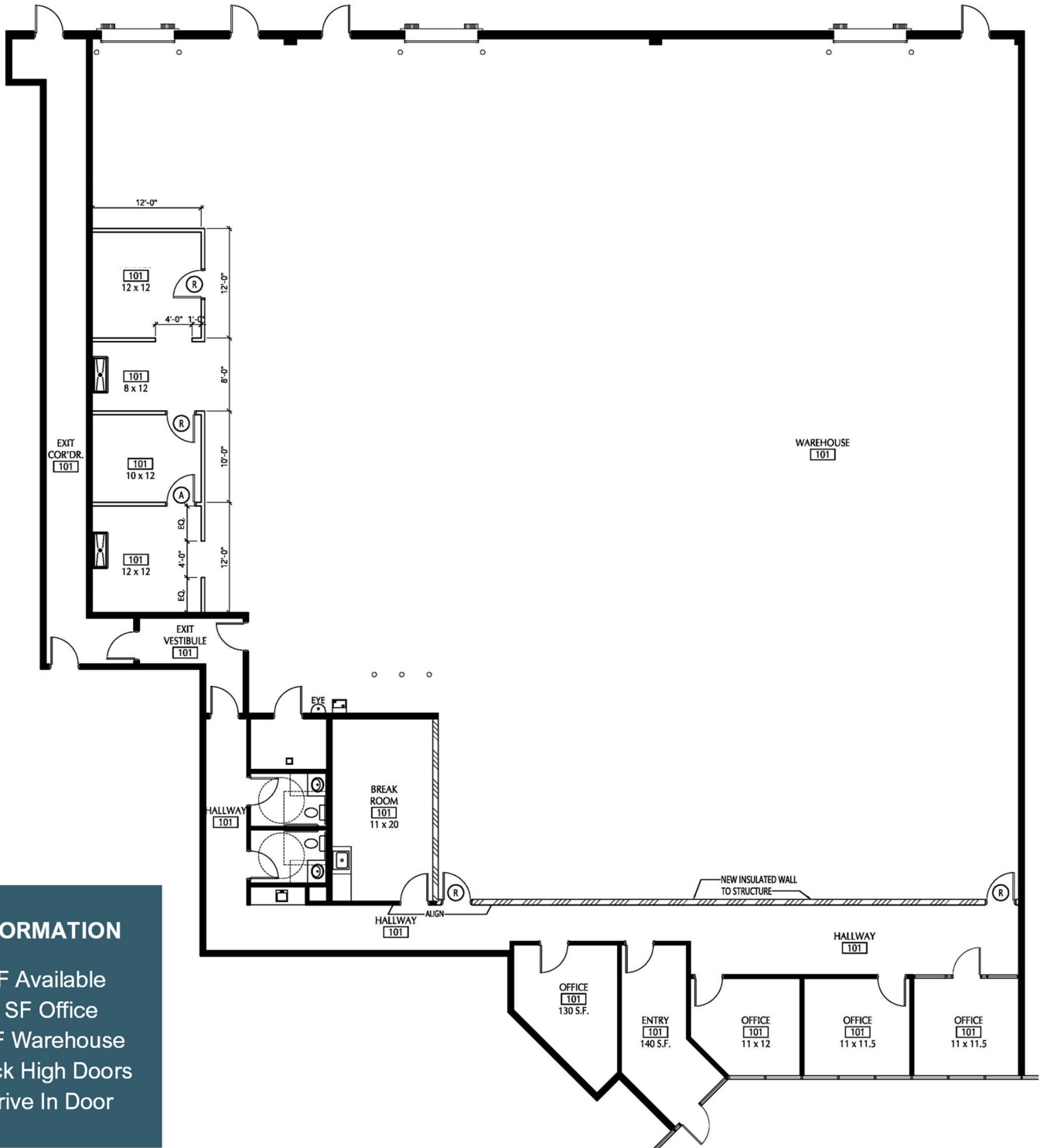
Owned by:



FOR LEASE

NORCROSS CENTER
2100-2200 NORCROSS PARKWAY
NORCROSS, GA 30071

FLOOR PLAN | 2200 NORCROSS PARKWAY | SUITE 240 | 11,031 SF



SUITE INFORMATION

11,031 SF Available
+/-1,200 SF Office
+/-9,831 SF Warehouse
Two (2) Dock High Doors
One (1) Drive In Door



Hughes Commercial Real Estate, Inc.
8215 Roswell Road, Building 700
Atlanta, GA 30350
770-559-1099

Matt Nelsen
404-431-0971
matt@hughes-cre.com

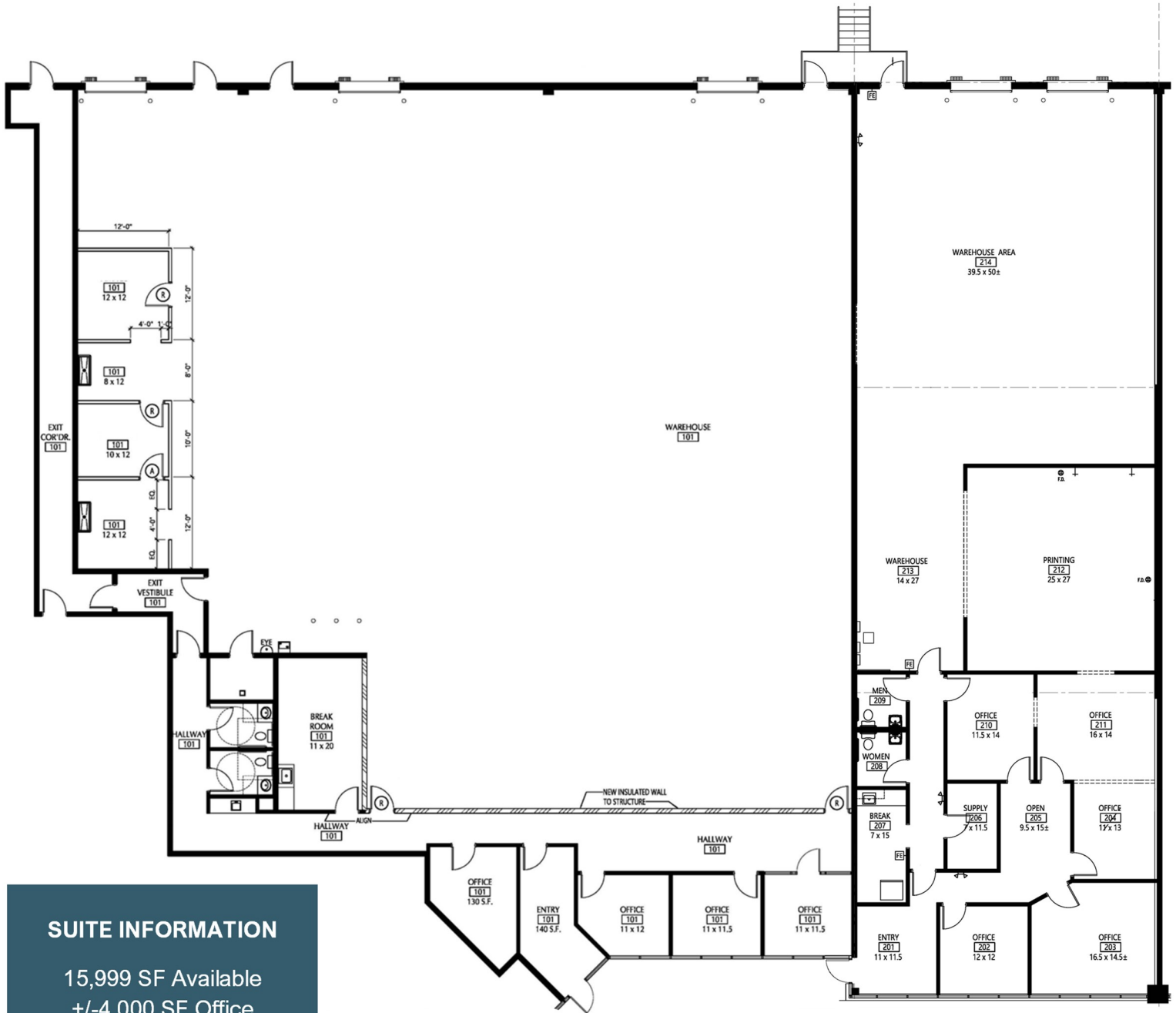
Owned by:



FOR LEASE

NORCROSS CENTER
2100-2200 NORCROSS PARKWAY
NORCROSS, GA 30071

FLOOR PLAN | 2200 NORCROSS PARKWAY | SUITE 235 & 240 | 15,999 SF



SUITE INFORMATION

15,999 SF Available
+/-4,000 SF Office
+/-11,999 SF Warehouse
Four (4) Dock High Doors
One (1) Drive In Doors



Hughes Commercial Real Estate, Inc.
8215 Roswell Road, Building 700
Atlanta, GA 30350
770-559-1099

Matt Nelsen
404-431-0971
matt@hughes-cre.com

Owned by:
AGELLAN
COMMERCIAL REIT

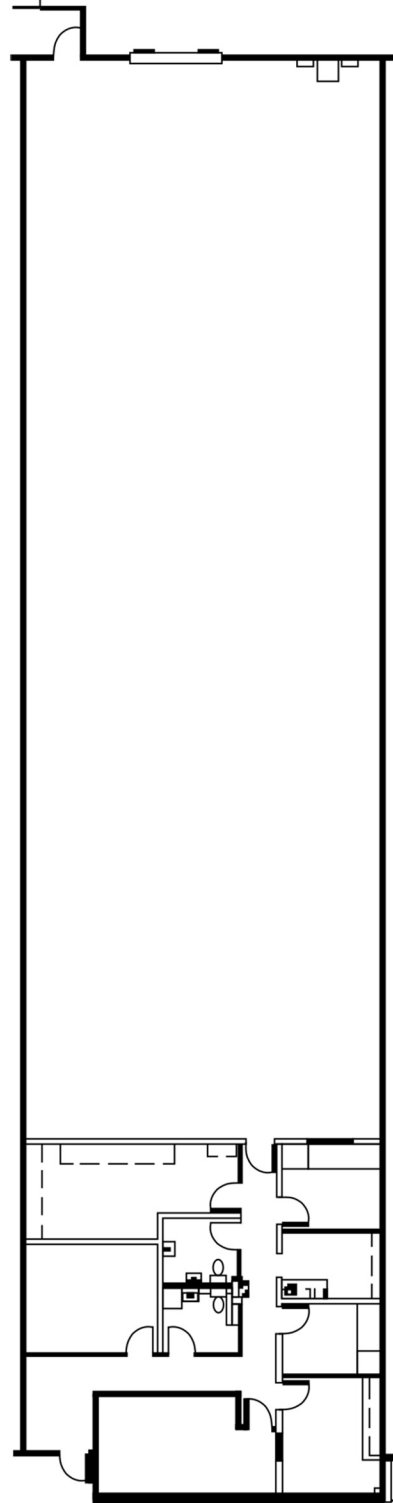
FOR LEASE

NORCROSS CENTER
2100-2200 NORCROSS PARKWAY
NORCROSS, GA 30071

FLOOR PLAN | 2200 NORCROSS PARKWAY | SUITE 250 | 6,400 SF

SUITE INFORMATION

6,400 SF Available
1,549 SF Office
4,851 SF Warehouse
One (1) Dock High Door



Hughes Commercial Real Estate, Inc.
8215 Roswell Road, Building 700
Atlanta, GA 30350
770-559-1099

Matt Nelsen
404-431-0971
matt@hughes-cre.com

Owned by:

