

FOR LEASE

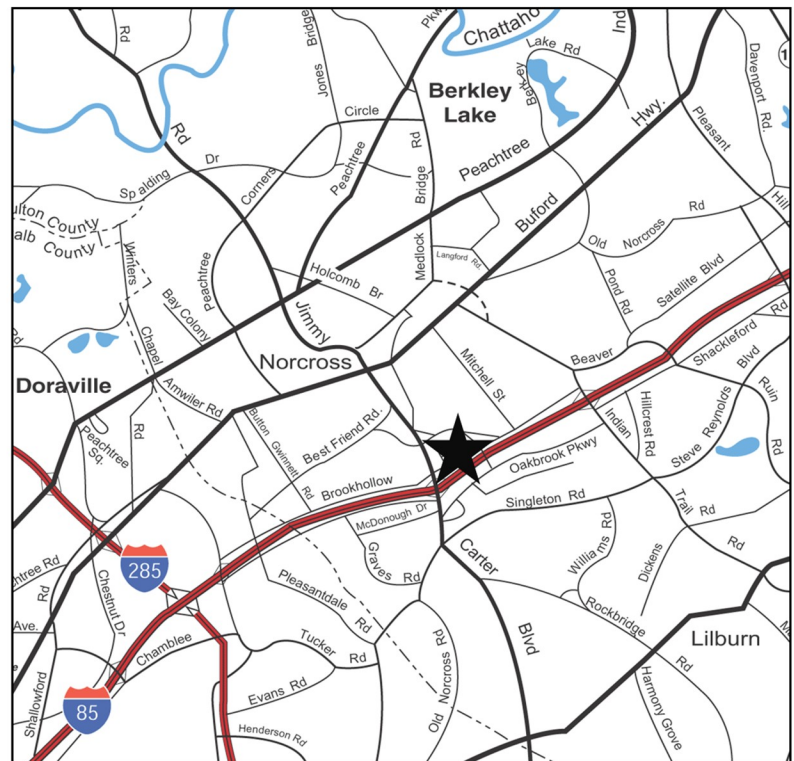
Brook Hollow Business Park
5801 - 5901 Goshen Springs Rd
Norcross, GA 30071

8,671 SF AVAILABLE



PROPERTY INFORMATION

- Available Suites:
 - **Suite E:** 8,671 SF Available
 - 8,671 SF Office / +/-6,671 SF Warehouse
 - Two (2) Dock-High Doors
 - One (1) Oversized Drive-In Door
- 20' minimum clear height
- Sprinklered
- Ample Parking
- Built in 1986
- Immediate access to I-85 via Jimmy Carter Blvd (0.6 miles)
- Corporate Business Park Environment



Hughes Commercial Real Estate, Inc.
8215 Roswell Road, Building 700
Atlanta, GA 30350
770-559-1099

Matt Nelsen
404-431-0971
matt@hughes-cre.com

Owned by:
AGELLAN
COMMERCIAL REIT

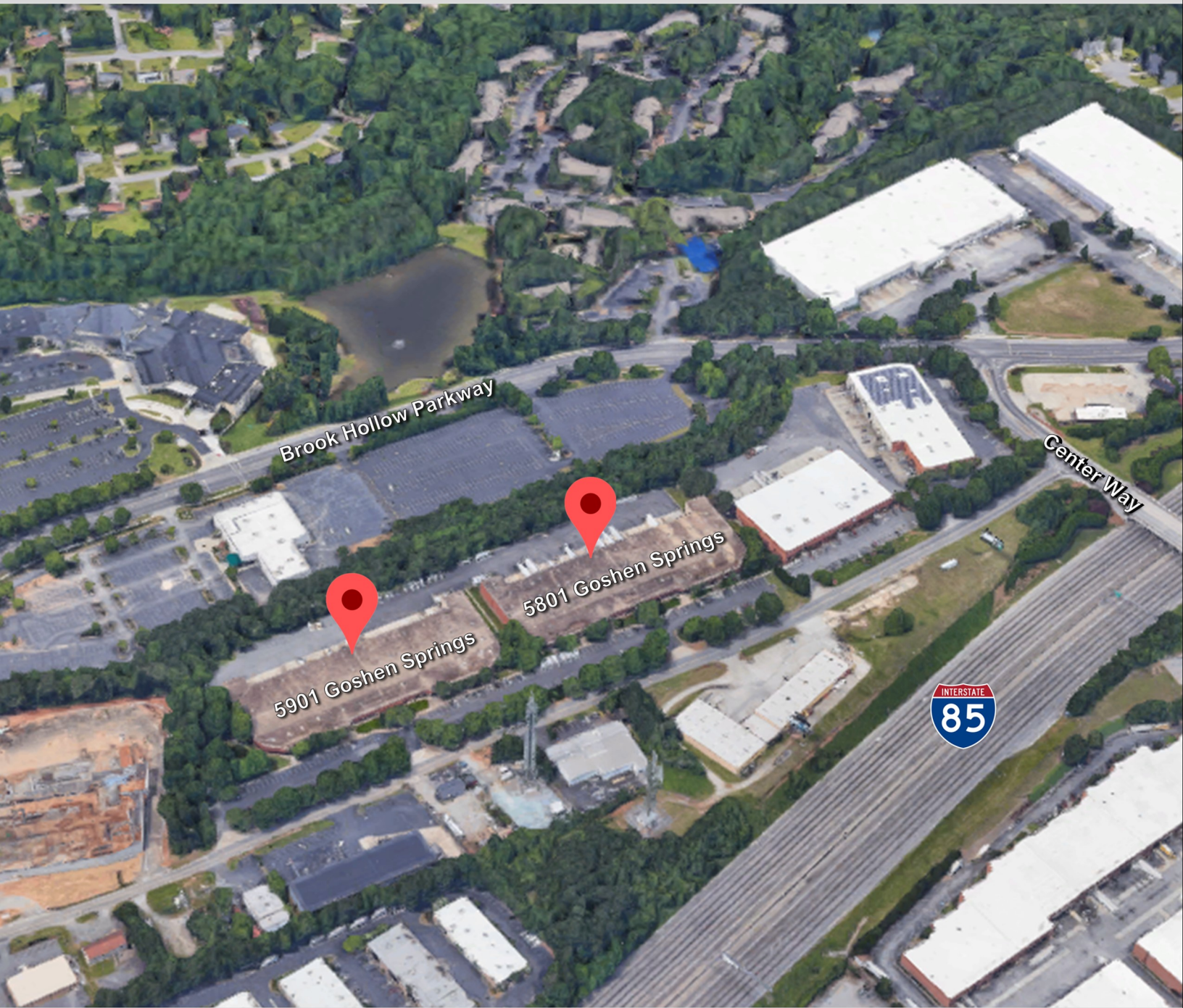
FOR LEASE

Brook Hollow Business Park

5801 - 5901 Goshen Springs Rd
Norcross, GA 30071

CURRENT AVAILABILITIES

Building	Suite	Available SF	Office SF	Warehouse SF	Clear Height	Dock Doors
5901 Goshen Springs	E	8,671	+/-2,000	+/-6,671	20'	2 DH, 1 DI



Hughes Commercial Real Estate, Inc.
8215 Roswell Road, Building 700
Atlanta, GA 30350
770-559-1099

Matt Nelsen
404-431-0971
matt@hughes-cre.com

Owned by:
AGELLAN
COMMERCIAL REIT

FOR LEASE

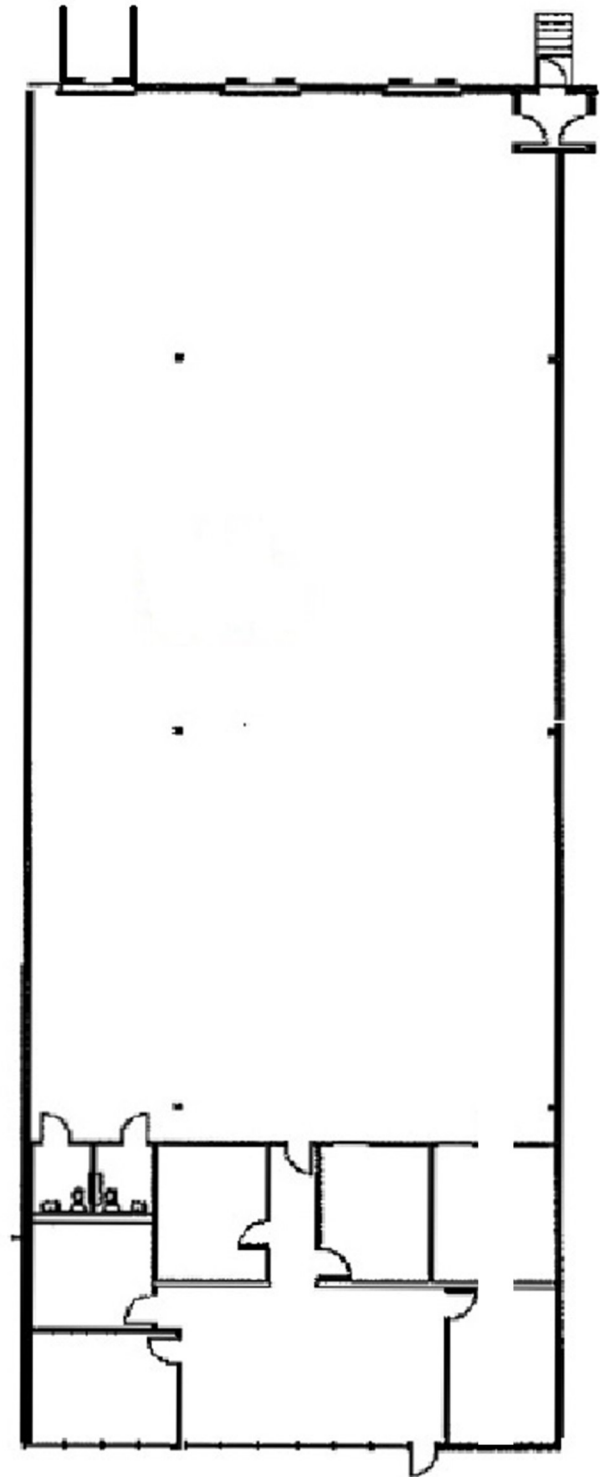
Brook Hollow Business Park

5801 - 5901 Goshen Springs Rd
Norcross, GA 30071

FLOOR PLAN | 5901 Goshen Springs | SUITE E | 8,671 SF

SUITE D INFORMATION

8,671 SF Available
+/-2,000 SF Office
+/-6,671 SF Warehouse
Two (2) Dock-High Doors
One (1) Drive-In Door



Hughes Commercial Real Estate, Inc.
8215 Roswell Road, Building 700
Atlanta, GA 30350
770-559-1099

Matt Nelsen
404-431-0971
matt@hughes-cre.com

Owned by:
AGELLAN
COMMERCIAL REIT