

# FOR LEASE

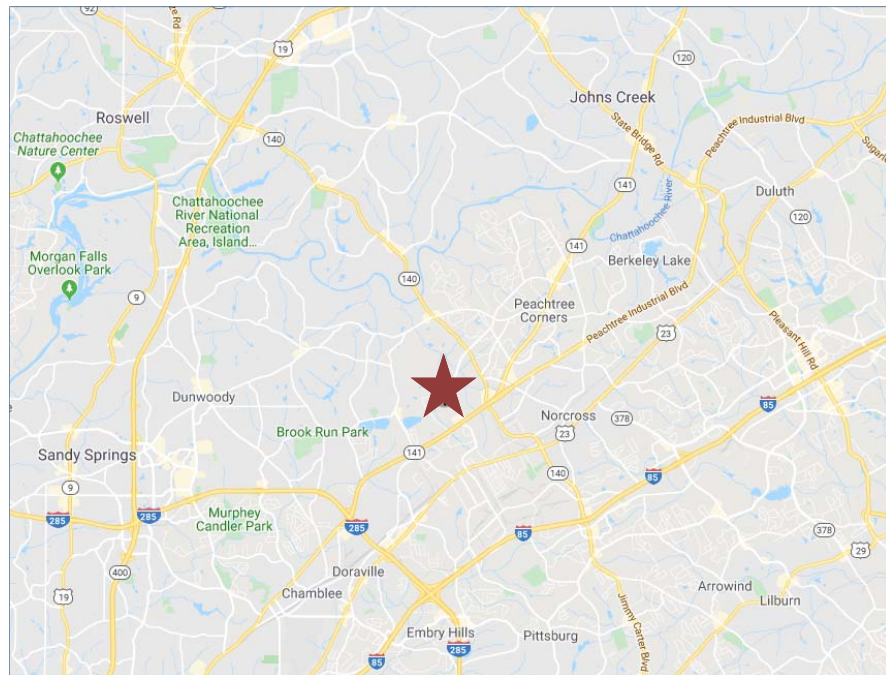
6733 Jones Mill Court  
Norcross, GA 30092

**HUGHES**  
COMMERCIAL REAL ESTATE



## PROPERTY INFORMATION

- 15,980 SF Available
- 3,300 SF Office
- 12,680 SF
- Four (4) Dock High Doors
- One (1) Drive In Door
- 21' Clear Height
- Immediate access to Peachtree Industrial Boulevard and I-285



**HUGHES**  
COMMERCIAL REAL ESTATE

**HUGHES**  
**COMMERCIAL**  
**REAL ESTATE**

1303 Hightower Trail  
Suite 240  
Atlanta, GA 30350  
770.559.1099

Matt Nelsen  
770.559.1099 x8808  
404.431.0971  
mnelsen@hughes-cre.com

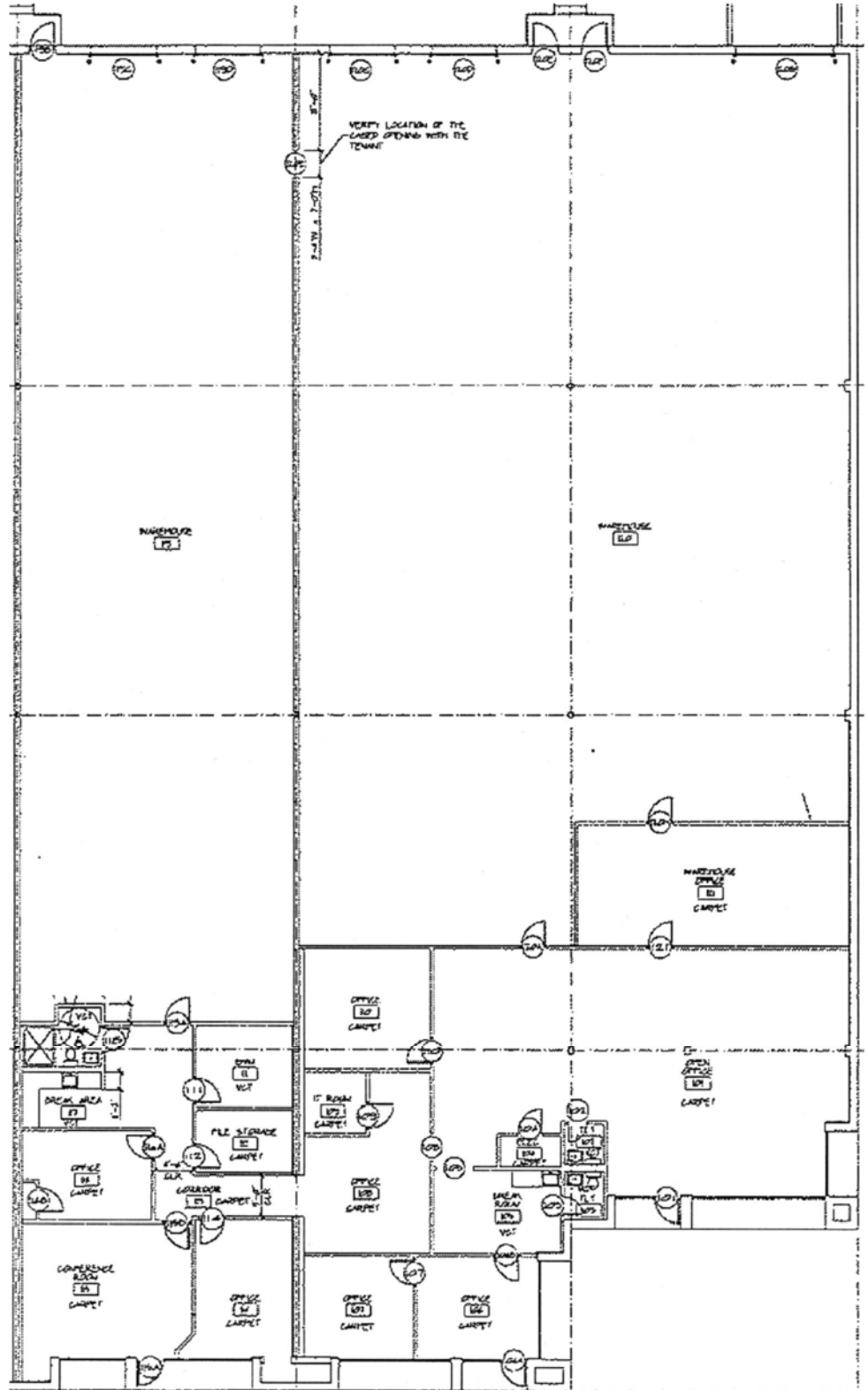
# FOR LEASE

## 6733 Jones Mill Court Norcross, GA 30092

**HUGHES**  
COMMERCIAL REAL ESTATE

### Suite E & F

- 15,980 SF Total
- 12,680 SF Warehouse
- 3,300 SF Office
- 4 Dock High Doors
- 1 Drive-In Door (10'x12')
- 21' Clear Height



THE **MERITEX** CO.  
ESTD 1916

**HUGHES**  
COMMERCIAL REAL ESTATE

**HUGHES**  
COMMERCIAL  
REAL ESTATE

1303 Hightower Trail  
Suite 240  
Atlanta, GA 30350  
770.559.1099

Matt Nelsen  
770.559.1099 x8808  
404.431.0971  
mnelsen@hughes-cre.com

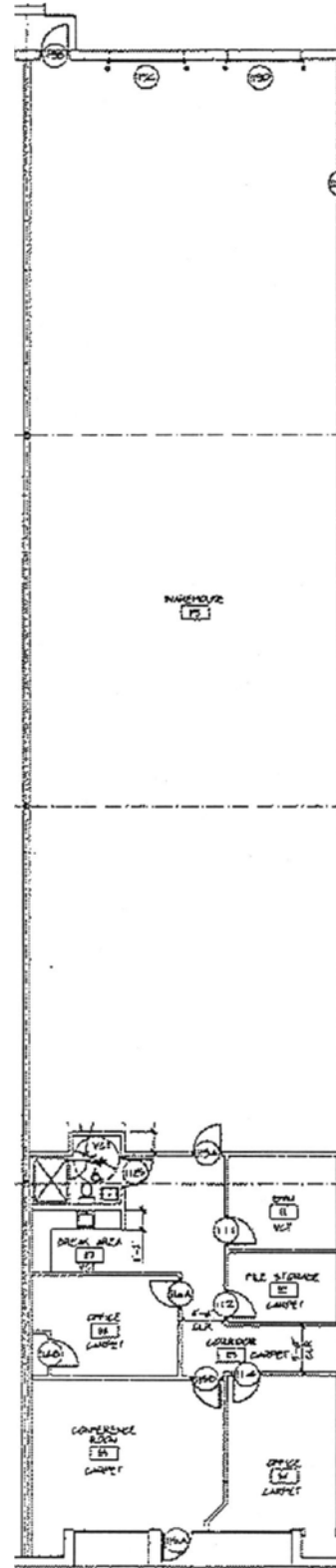
# FOR LEASE

6733 Jones Mill Court  
Norcross, GA 30092

HUGHES  
COMMERCIAL REAL ESTATE

## Suite E

- 5,400 SF Total
- 4,100 SF Warehouse
- 1,300 SF Office
- 2 Dock High Doors
- 21' Clear Height



THE MERITEX<sup>®</sup> CO.  
ESTD 1916

HUGHES  
COMMERCIAL REAL ESTATE

HUGHES  
COMMERCIAL  
REAL ESTATE

1303 Hightower Trail  
Suite 240  
Atlanta, GA 30350  
770.559.1099

Matt Nelsen  
770.559.1099 x8808  
404.431.0971  
mnelson@hughes-cre.com

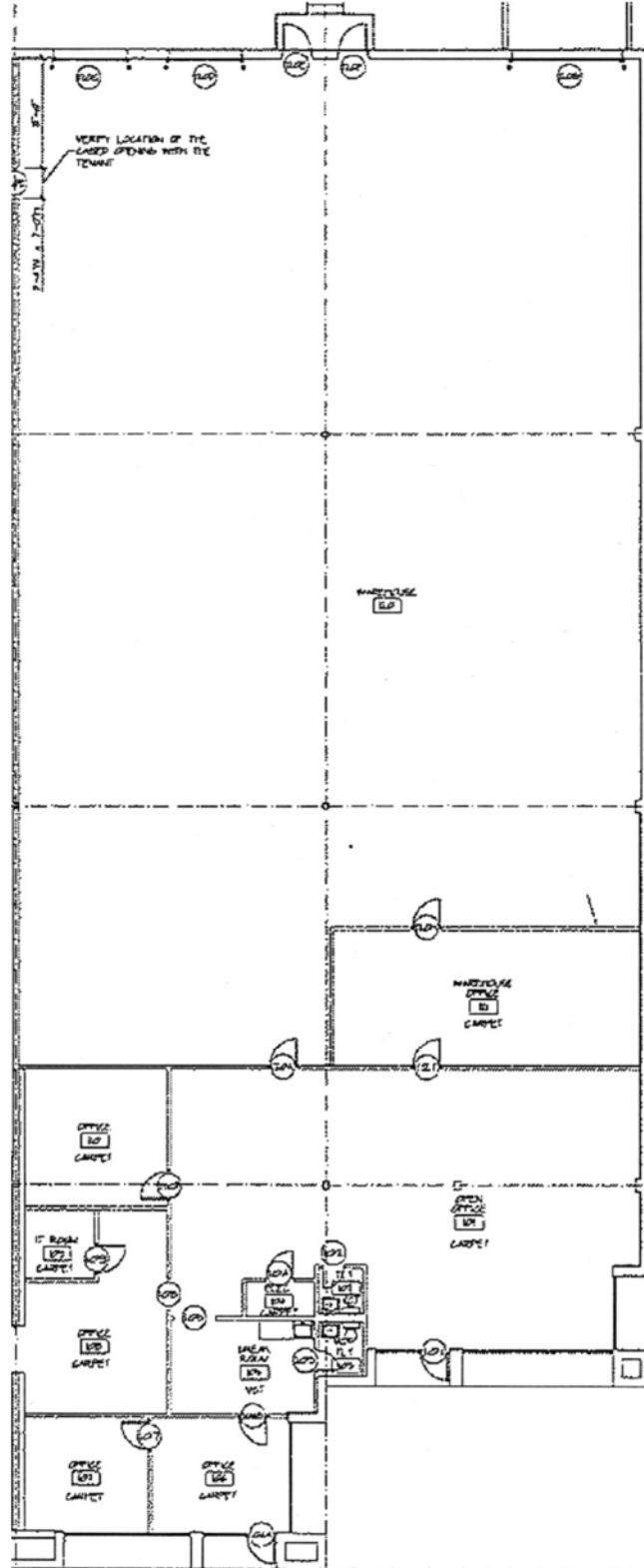
# FOR LEASE

## 6733 Jones Mill Court Norcross, GA 30092

**HUGHES**  
COMMERCIAL REAL ESTATE

### Suite F

- 10,580 SF Total
- 8,580 SF Warehouse
- 2,000 SF Office
- 2 Dock High Doors
- 1 Drive-In Door (10'x12')
- 21' Clear Height



THE **MERITEX** CO.  
ESTD 1916

**HUGHES**  
COMMERCIAL REAL ESTATE

**HUGHES**  
COMMERCIAL  
REAL ESTATE

1303 Hightower Trail  
Suite 240  
Atlanta, GA 30350  
770.559.1099

Matt Nelsen  
770.559.1099 x8808  
404.431.0971  
mnelsen@hughes-cre.com