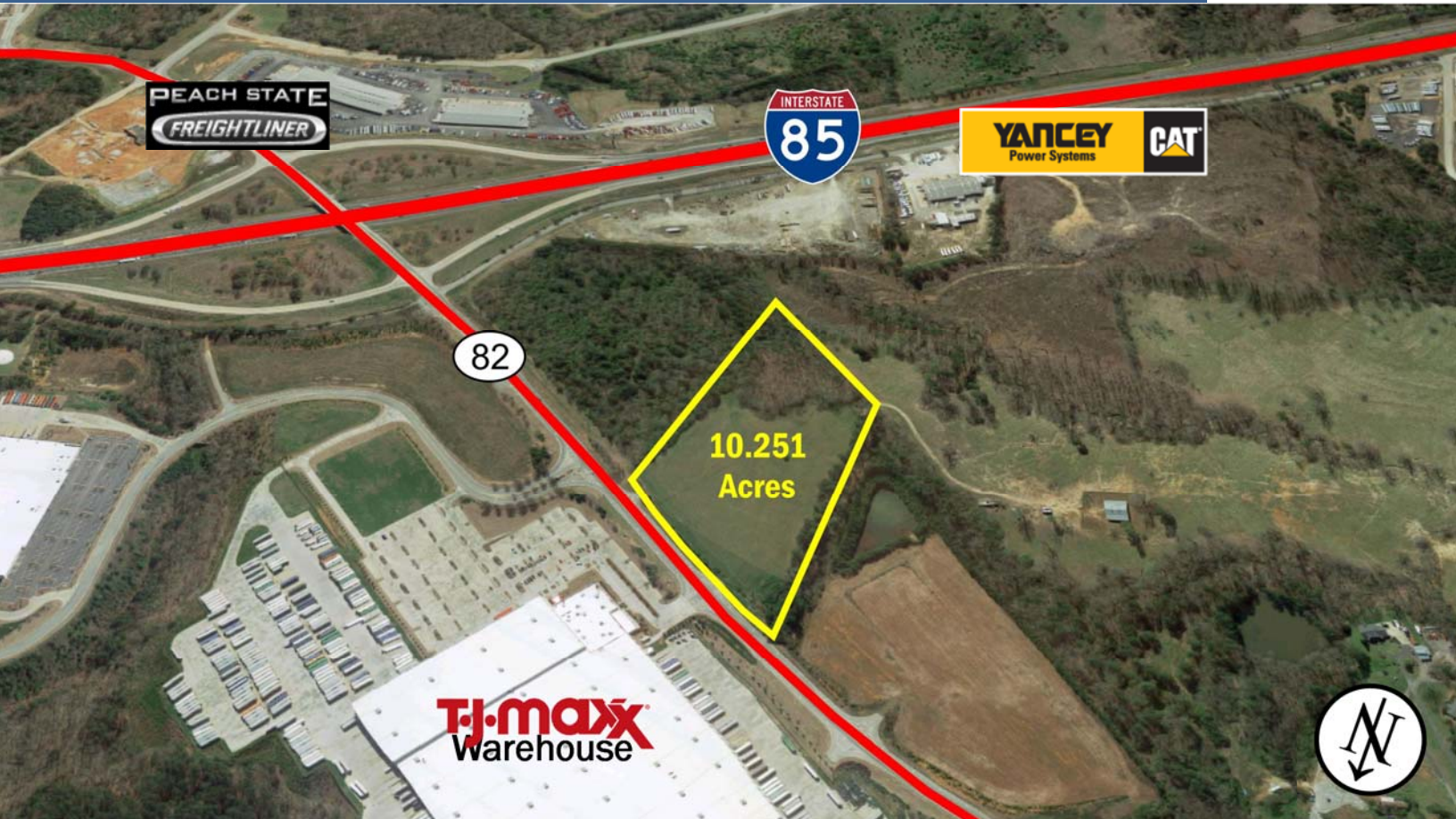


# FOR SALE

2306 HOLLY SPRINGS ROAD  
JEFFERSON, GA 30549

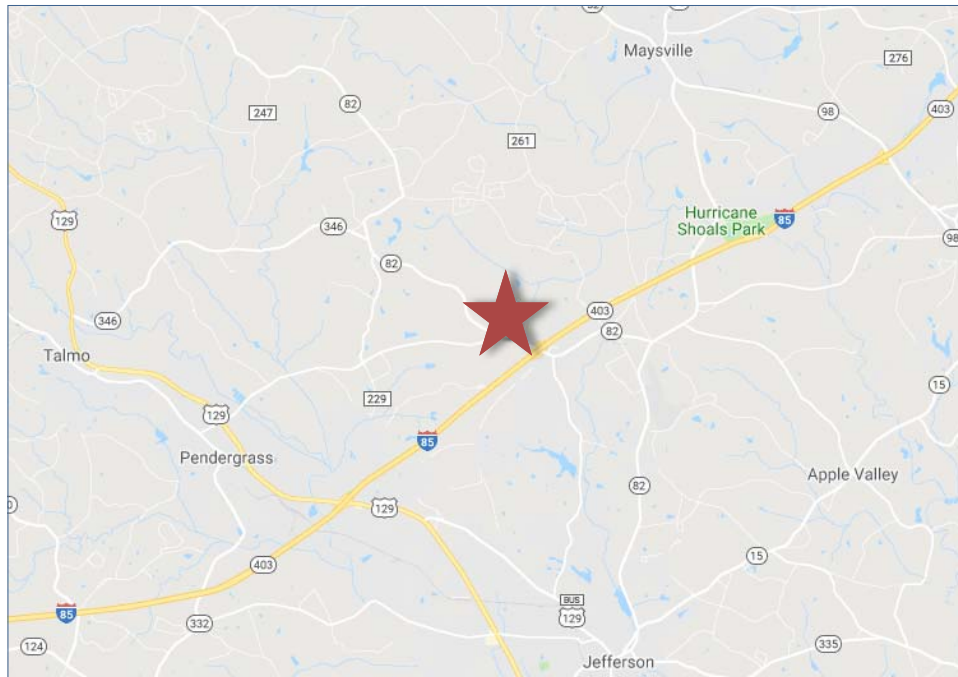
**HUGHES**  
COMMERCIAL REAL ESTATE



**ASKING PRICE**  
**\$1,640,160**  
**(\$160,000/ACRE)**

## PROPERTY INFORMATION

- 10.251 Acres
- Industrial Zoned (Commercial Potential)
- 0.3 Miles from I-85
- Frontage Along GA-82 (Holly Springs Rd)
- Majority of site cleared of trees



**HUGHES**  
COMMERCIAL REAL ESTATE

**HUGHES**  
**COMMERCIAL**  
**REAL ESTATE**

1303 Hightower Trail  
Suite 240  
Atlanta, GA 30350  
770.559.1099

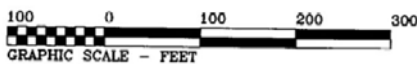
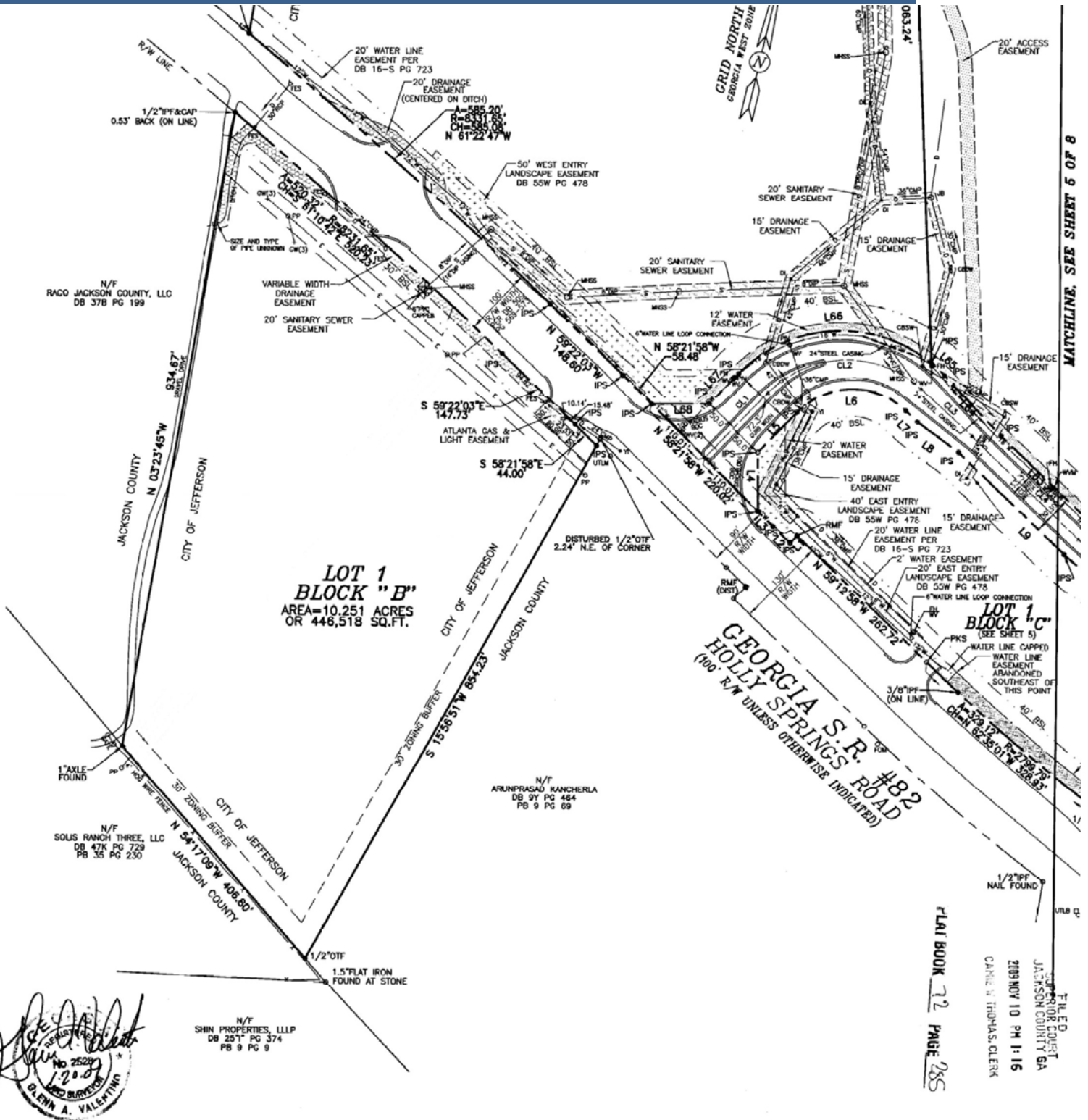
Tommy Hughes  
770.559.1099 x8805  
404.218.5080  
thughes@hughes-cre.com

Stuart Bracey  
770.559.1099 x8809  
404.664.5321  
stuart@hughes-cre.com

# FOR SALE

## 2306 HOLLY SPRINGS ROAD JEFFERSON, GA 30549

### HUGHES COMMERCIAL REAL ESTATE



### HUGHES COMMERCIAL REAL ESTATE

### HUGHES COMMERCIAL REAL ESTATE

1303 Hightower Trail  
Suite 240  
Atlanta, GA 30350  
770.559.1099

Tommy Hughes  
770.559.1099 x8805  
404.218.5080  
thughes@hughes-cre.com

Stuart Bracey  
770.559.1099 x8809  
404.664.5321  
stuart@hughes-cre.com