

FOR SUBLEASE

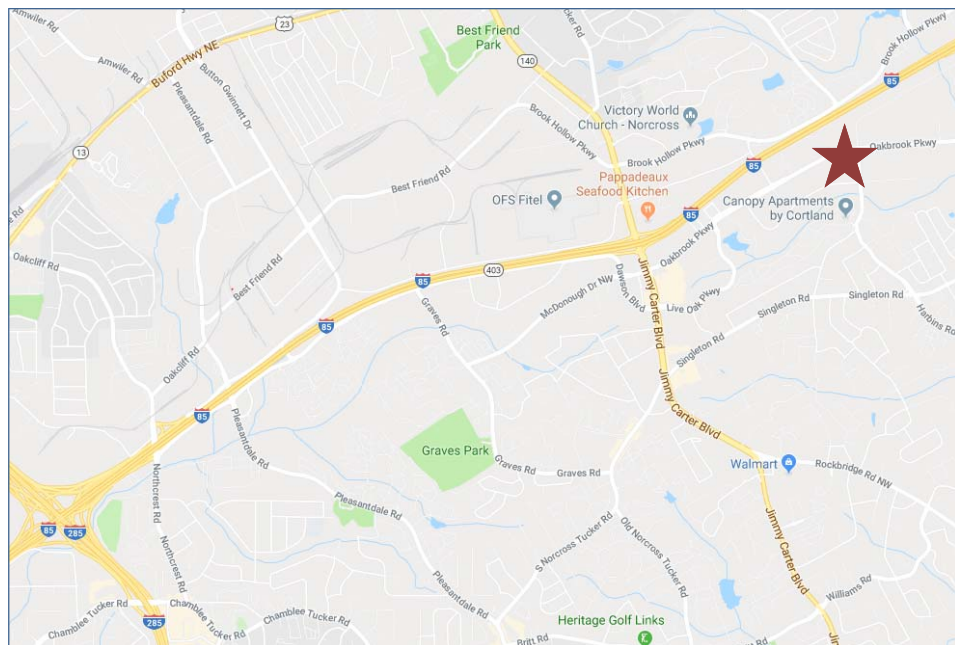
1325 Oakbrook Drive
Suite C
Norcross, GA 30093

HUGHES
COMMERCIAL REAL ESTATE



PROPERTY INFORMATION

- 10,240 SF Available
- Immediate access to I-85
- Corporate business environment
- Abundant parking
- Tax incentives available
- Aggressive economics



HUGHES
COMMERCIAL REAL ESTATE

HUGHES
COMMERCIAL
REAL ESTATE

1303 Hightower Trail
Suite 240
Atlanta, GA 30350
770.559.1099

Matt Nelsen
770.559.1099 x8808
404.431.0971
mnelsen@hughes-cre.com

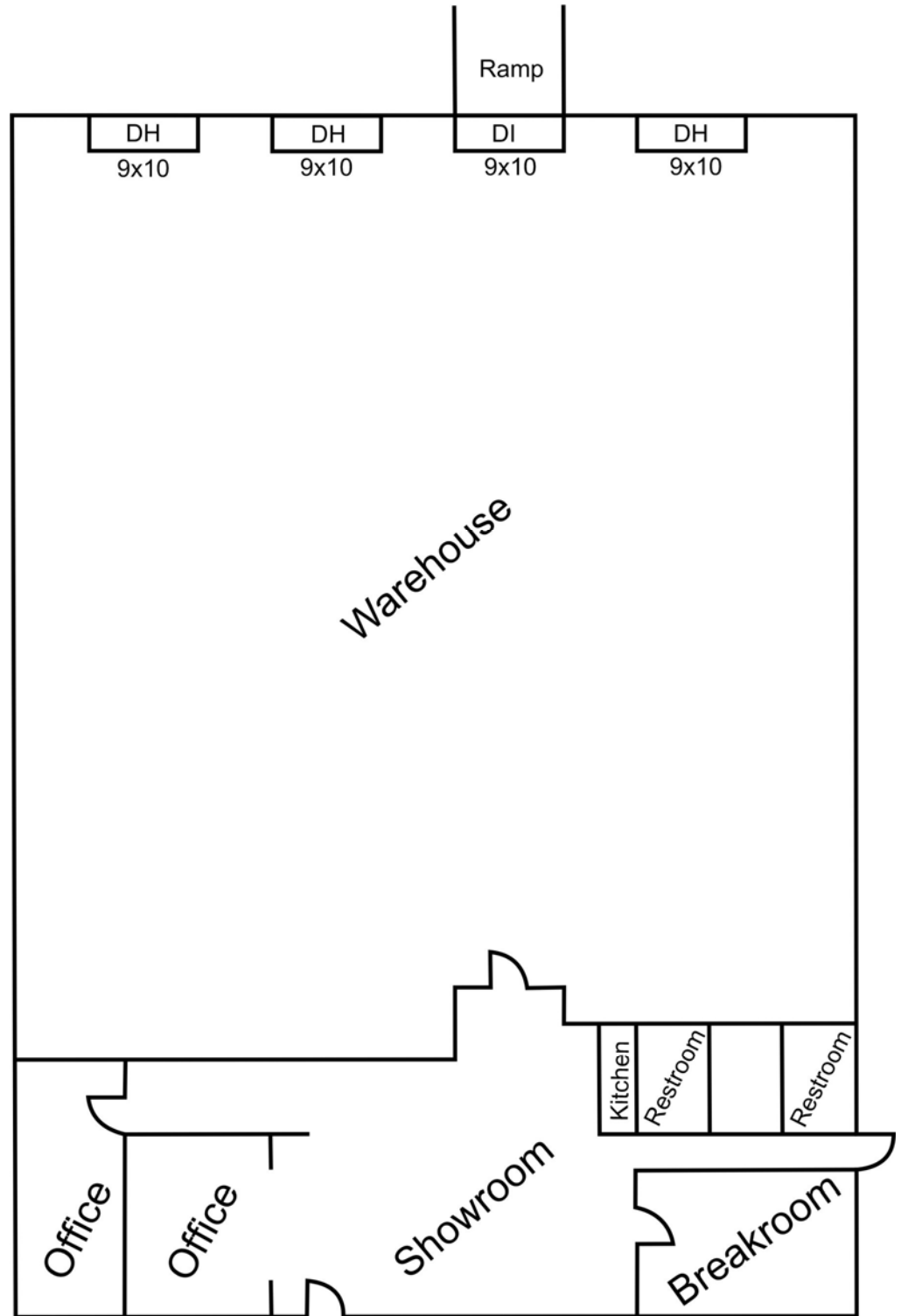
FOR SUBLEASE

1325 Oakbrook Drive
Suite C
Norcross, GA 30093



Suite C

- 10,240 SF Total
- 8,953 SF Warehouse
- 1,287 SF Office
- 3 Dock High Doors
- 1 Drive-in Door
- Available: 9/1/19
- Term Expire 12/31/23



HUGHES
COMMERCIAL
REAL ESTATE

1303 Hightower Trail
Suite 240
Atlanta, GA 30350
770.559.1099

Matt Nelsen
770.559.1099 x8808
404.431.0971
mnelsen@hughes-cre.com